

Recombinant Human BHMT Protein, GST-tagged

Cat. No. BHMT-214H Lot. No. (See product label)

SPECIFICATION

Product Overview	Human BHMT partial ORF (NP_001704.1, 1 a.a. - 100 a.a.) recombinant protein with GST-tag at N-terminal.
Species	Human
Source	Wheat Germ
Description	This gene encodes a cytosolic enzyme that catalyzes the conversion of betaine and homocysteine to dimethylglycine and methionine, respectively. Defects in this gene could lead to hyperhomocyst(e)inemia, but such a defect has not yet been observed.
Form	50 mM Tris-HCl, 10 mM reduced Glutathione, pH=8.0 in the elution buffer.
Molecular Mass	36.74 kDa
AA Sequence	MPPVGGKKAKKGILERLNAGEIVIGDGGFVFALEKRGYVKAGPWTPEAAVEHPEAV RQLHREFLRAGSNVMQTFYASEDKLENRGNYVLEKISGQEVN
Notes	Best use within three months from the date of receipt of this protein.
Storage	Store at -80 centigrade. Aliquot to avoid repeated freezing and thawing.
Storage Buffer	50 mM Tris-HCl, 10 mM reduced Glutathione, pH=8.0 in the elution buffer.

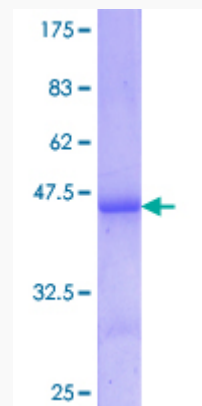
GENE INFORMATION

 Tel: 1-631-559-9269 1-516-512-3133

 Email: info@creative-biomart.com  Fax: 1-631-938-8127

 45-1 Ramsey Road, Shirley, NY 11967, USA

Gene Name	BHMT betaine--homocysteine S-methyltransferase [Homo sapiens]
Official Symbol	BHMT
Synonyms	BHMT; betaine--homocysteine S-methyltransferase; betaine--homocysteine S-methyltransferase 1; betaine homocysteine methyltransferase; BHMT1;
Gene ID	635
mRNA Refseq	NM_001713
Protein Refseq	NP_001704
MIM	602888
UniProt ID	Q93088



 Tel: 1-631-559-9269 1-516-512-3133

 Email: info@creative-biomart.com  Fax: 1-631-938-8127

 45-1 Ramsey Road, Shirley, NY 11967, USA