

Recombinant Human BHMT Protein, Myc/DDK-tagged, C13 and N15-labeled

Cat. No. BHMT-5608H Lot. No. (See product label)

SPECIFICATION

Product Overview	BHMT MS Standard C13 and N15-labeled recombinant protein (NP_001704) with a C-terminal MYC/DDK tag, was expressed in HEK293 cells.
Species	Human
Source	HEK293
Description	This gene encodes a cytosolic enzyme that catalyzes the conversion of betaine and homocysteine to dimethylglycine and methionine, respectively. Defects in this gene could lead to hyperhomocyst(e)inemia, but such a defect has not yet been observed.
Molecular Mass	45 kDa
AA Sequence	MPPVGGKKAKKGILERLNAGEIVIGDGGFVFALEKRGYVKAGPWTPEAAVEHPEAV RQLHREFLRAGSNVMQTFTFYASEDKLENRGNVLEKISGQEVNEAACDIARQVAD EGDALVAGGVSQTPSYLSCKSETEVKKVFLQQLEVFMKKNVDFLIAEYFEHVVEAV WAVETLIASGKPVAAATMCIGPEGDLHGVPPEGCAVRLVKAGASIIGVNCHFDPTISLK TVKLMKEGLEAARLKAHLMSQPLAYHTPDCNKQGFDLPEFPFGLEPRVATRWDIQK YAREAYNLGVRYIGGCCGFEPYHIRAIAEELAPERGFPPASEKHGSWGSGGLDMHT KPWVRARARKEYWENLRIASGRPYNPSMSKPDGWGVTKGTAELMQQKEATTEQQ LKELFEKQKFKSQTRTRPLEQKLISEEDLAANDILDYKDDDDKV
Purity	> 80% as determined by SDS-PAGE and Coomassie blue staining

 Tel: 1-631-559-9269 1-516-512-3133

 Email: info@creative-biomart.com  Fax: 1-631-938-8127

 45-1 Ramsey Road, Shirley, NY 11967, USA

Stability	Stable for 3 months from receipt of products under proper storage and handling conditions.
Storage	Store at -80 centigrade. Avoid repeated freeze-thaw cycles.
Concentration	50 µg/mL as determined by BCA
Storage Buffer	100 mM glycine, 25 mM Tris-HCl, pH 7.3.

GENE INFORMATION

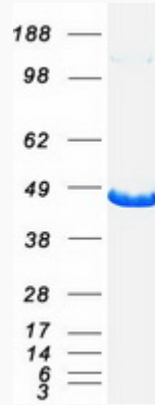
Gene Name	BHMT betaine--homocysteine S-methyltransferase [Homo sapiens (human)]
Official Symbol	BHMT
Synonyms	BHMT; betaine--homocysteine S-methyltransferase; betaine--homocysteine S-methyltransferase 1; betaine homocysteine methyltransferase; BHMT1;
Gene ID	635
mRNA Refseq	NM_001713
Protein Refseq	NP_001704
MIM	602888
UniProt ID	Q93088

 Tel: 1-631-559-9269 1-516-512-3133

 Email: info@creative-biomart.com  Fax: 1-631-938-8127

 45-1 Ramsey Road, Shirley, NY 11967, USA

SDS-PAGE



 Tel: 1-631-559-9269 1-516-512-3133

 Email: info@creative-biomart.com  Fax: 1-631-938-8127

 45-1 Ramsey Road, Shirley, NY 11967, USA