

Recombinant Human BHMT2 Protein, GST-tagged

Cat. No. BHMT2-216H Lot. No. (See product label)

SPECIFICATION

Product Overview	Human BHMT2 partial ORF (NP_060084, 1 a.a. - 110 a.a.) recombinant protein with GST-tag at N-terminal.
Species	Human
Source	Wheat Germ
Description	Homocysteine is a sulfur-containing amino acid that plays a crucial role in methylation reactions. Transfer of the methyl group from betaine to homocysteine creates methionine, which donates the methyl group to methylate DNA, proteins, lipids, and other intracellular metabolites. The protein encoded by this gene is one of two methyl transferases that can catalyze the transfer of the methyl group from betaine to homocysteine. Anomalies in homocysteine metabolism have been implicated in disorders ranging from vascular disease to neural tube birth defects such as spina bifida.
Form	50 mM Tris-HCl, 10 mM reduced Glutathione, pH=8.0 in the elution buffer.
Molecular Mass	37.84 kDa
AA Sequence	MAPAGRPGAKKGILERLESGEVVIGDGSFLITLEKRGYVKAGLWTPEAVIEHPDAVR QLHMEFLRAGSNVMQTFSTFASSEDNMESKWEDVNAAACDLAREVAGKGDALVA
Notes	Best use within three months from the date of receipt of this protein.

 Tel: 1-631-559-9269 1-516-512-3133

 Email: info@creative-biomart.com  Fax: 1-631-938-8127

 45-1 Ramsey Road, Shirley, NY 11967, USA

Storage Store at -80 centigrade. Aliquot to avoid repeated freezing and thawing.

Storage Buffer 50 mM Tris-HCl, 10 mM reduced Glutathione, pH=8.0 in the elution buffer.

GENE INFORMATION

Gene Name BHMT2 betaine--homocysteine S-methyltransferase 2 [Homo sapiens]

Official Symbol BHMT2

Synonyms BHMT2; betaine--homocysteine S-methyltransferase 2; S-methylmethionine--homocysteine S-methyltransferase BHMT2; SMM-hcy methyltransferase; betaine-homocysteine methyltransferase 2; FLJ20001;

Gene ID 23743

mRNA Refseq NM_001178005

Protein Refseq NP_001171476

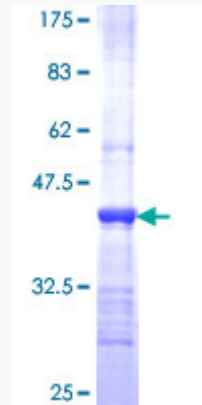
MIM 605932

UniProt ID Q9H2M3

 Tel: 1-631-559-9269 1-516-512-3133

 Email: info@creative-biomart.com  Fax: 1-631-938-8127

 45-1 Ramsey Road, Shirley, NY 11967, USA



 Tel: 1-631-559-9269 1-516-512-3133

 Email: info@creative-biomart.com  Fax: 1-631-938-8127

 45-1 Ramsey Road, Shirley, NY 11967, USA