

Recombinant Human BICD1 Protein, GST-tagged

Cat. No. BICD1-217H **Lot. No.** (See product label)

SPECIFICATION

Product Overview	Human BICD1 partial ORF (NP_001705, 1 a.a. - 70 a.a.) recombinant protein with GST-tag at N-terminal.
Species	Human
Source	Wheat Germ
Description	This gene is one of two human homologs of Drosophila bicaudal-D. It has been implicated in COPI-independent membrane transport from the Golgi apparatus to the endoplasmic reticulum. Two alternative splice variants have been described. Other alternative splice variants that encode different protein isoforms have been described but their full-length nature has not been determined.
Form	50 mM Tris-HCl, 10 mM reduced Glutathione, pH=8.0 in the elution buffer.
Molecular Mass	33.44 kDa
AA Sequence	MAAEEVLQTVLDHYKTEIERLTKELTETTHEKIQAAEYGLVVLEEKLTLKQQYDELEAE YDSLKQELEQLK
Notes	Best use within three months from the date of receipt of this protein.
Storage	Store at -80 centigrade. Aliquot to avoid repeated freezing and thawing.
Storage Buffer	50 mM Tris-HCl, 10 mM reduced Glutathione, pH=8.0 in the elution buffer.

 Tel: 1-631-559-9269 1-516-512-3133

 Email: info@creative-biomart.com  Fax: 1-631-938-8127

 45-1 Ramsey Road, Shirley, NY 11967, USA

GENE INFORMATION

Gene Name BICD1 bicaudal D homolog 1 (Drosophila) [Homo sapiens]

Official Symbol BICD1

Synonyms Bic-D 1; Bicaudal D homolog 1; BICD; Bicd1; BICD1_HUMAN; Cytoskeleton like bicaudal D protein homolog 1; Protein bicaudal D homolog 1; BICD1

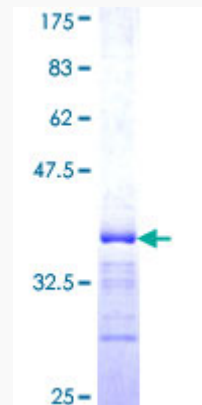
Gene ID 636

mRNA Refseq NM_001714.2

Protein Refseq NP_001705.2

MIM 602204

UniProt ID Q96G01



 Tel: 1-631-559-9269 1-516-512-3133

 Email: info@creative-biomart.com  Fax: 1-631-938-8127

 45-1 Ramsey Road, Shirley, NY 11967, USA