

Recombinant Human BICD1 Protein, Myc/DDK-tagged, C13 and N15-labeled

Cat. No. BICD1-2280H **Lot. No.** (See product label)

SPECIFICATION

Product Overview

BICD1 MS Standard C13 and N15-labeled recombinant protein (NP_001705) with a C-terminal MYC/DDK tag, was expressed in HEK293 cells.

Species

Human

Source

HEK293

Description

This gene encodes an adaptor protein that belongs to the bicaudal D family of dynein cargo adaptors. The encoded protein acts as an intracellular cargo transport cofactor that regulates the microtubule-based loading of cargo onto the dynein motor complex. It also controls dynein motor activity and coordination. It has a domain architecture consisting of coiled-coil domains at the N- and C-termini that are highly conserved in other family members. Naturally occurring mutations in this gene are associated with short telomere length and emphysema.

Molecular Mass

110.6 kDa

AA Sequence

MAAEEVLQTVDPHYKTEIERLTKELTETTHEKIQAAYGLVVLEEKLTLLKQQYDELEAE
YDSLKQELEQLKEAFGQSFQSIHRKVAEDGETREETLLQESASKEAYYLGKILEMQNE
LKQSRVVTVNVAENERLTAVVQDLKENNEMVELQRIRMKDEIREYKFREARLLQD
YTELEEEENITLQKLVSTLKQNVQVEYEGLKHEIKRFEETVLLNSQLEDAIRLKEIAEHQ
LEEALETLKNEREQKNLRLKELSQYISLNDNHISISVDGLKFAEDGSEPNDDKMNG
HIHGPLVKLNGDYRTPTLRKGESLNPVSDLFSELNISEIQKLLKQQLMQVEREKAILLA

 Tel: 1-631-559-9269 1-516-512-3133

 Email: info@creative-biomart.com  Fax: 1-631-938-8127

 45-1 Ramsey Road, Shirley, NY 11967, USA

NLQESQTQLEHTKGALTEQHERVHRLTEHVNAMRGLQSSKELKAELDGEKGRDSEG
 EEADHYEVDINGLEILECKYRVAVTEVIDLKAEIKALKEKYNKSVENYTDEKAKYESKI
 QMYDEQVTSLEKTTKESGEKMAHMEKELQKMTSIANENHSTLNTAQDELVTFSEEL
 AQLYHHVCLCNETPNRVMLDYRQSRVTRSGSLKGPDDPRGLLSPRLARRGVSS
 PVETRTSSEPVAKESTEASKEPSPTKTPTISPVITAPPSSPVLDTSDIRKEPMNIYNLN
 AIIRDQIKHLQKAVDRSLQLSRQAAARELAPMIDKDKEALMEEILKLKSLSTKREQI
 ATLRAVLKANKQTAEVALANLKNKYENEKAMVTETMTKLRNELKALKEDAATFSSLR
 AMFATRCDEYVTQLDEMQRQLAAAEDKKTLLNTLLRMAIQKALALTQRLEDLEFDH
 EQSRRSKGKLGKSKIGSPKVSGEASVTVPIDTYLLHSQGPQTPNIRVSSGTQRKRQ
 FSPSLCDQSRPRTSGASYLQNLRRVPPDPTSTESFLLKGPPSMSEFIQGHRLSKEKR
 LTVAPPDCQQPAASVPPQCSQLAGRQDCPTVSPDTALPEEQPHSSSQCAPLHCLS
 KPPHPTRTRPLEQKLISEEDLAANDILDYKDDDDKV

Purity > 80% as determined by SDS-PAGE and Coomassie blue staining

Stability Stable for 3 months from receipt of products under proper storage and handling conditions.

Storage Store at -80 centigrade. Avoid repeated freeze-thaw cycles.

Concentration 50 µg/mL as determined by BCA

Storage Buffer 100 mM glycine, 25 mM Tris-HCl, pH 7.3.

GENE INFORMATION

Gene Name BICD1 BICD cargo adaptor 1 [Homo sapiens (human)]

Official Symbol BICD1

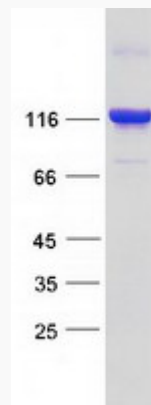
Synonyms Bic-D 1; Bicaudal D homolog 1; BICD; Bicd1; BICD1_HUMAN; Cytoskeleton like

 Tel: 1-631-559-9269 1-516-512-3133

 Email: info@creative-biomart.com  Fax: 1-631-938-8127

 45-1 Ramsey Road, Shirley, NY 11967, USA

bicaudal D protein homolog 1; Protein bicaudal D homolog 1; BICD1

Gene ID 636**mRNA Refseq** NM_001714**Protein Refseq** NP_001705**MIM** 602204**UniProt ID** Q96G01**SDS-PAGE** Tel: 1-631-559-9269 1-516-512-3133 Email: info@creative-biomart.com  Fax: 1-631-938-8127 45-1 Ramsey Road, Shirley, NY 11967, USA