

Recombinant Human BIN1 Protein (Met1-Ser276), N-His tagged

Cat. No. BIN1-0703H Lot. No. (See product label)

SPECIFICATION

| | |
|-------------------------|---|
| Product Overview | Recombinant Human BIN1 (Met1-Ser276) fused with the N-His tag was expressed in E. coli. |
| Species | Human |
| Source | E.coli |
| ProteinLength | Met1-Ser276 |
| Form | Lyophilized powder/frozen liquid |
| Molecular Mass | 33.90 kDa |
| Purity | >90% as determined by SDS-PAGE. |
| Notes | For research use only. |
| Storage | Use a manual defrost freezer and avoid repeated freeze thaw cycles. Store at 2 to 8 centigrade for one week. Store at -20 to -80 centigrade for twelve months from the date of receipt. |
| Storage Buffer | 0.01M PBS, pH 7.4, 0.02% NLS |
| Reconstitution | Reconstitute in sterile water for a stock solution. |

 Tel: 1-631-559-9269 1-516-512-3133

 Email: info@creative-biomart.com  Fax: 1-631-938-8127

 45-1 Ramsey Road, Shirley, NY 11967, USA

Shipping They are shipped out with dry ice/blue ice unless customers require otherwise.

GENE INFORMATION

Gene Name BIN1 bridging integrator 1 [Homo sapiens (human)]

Official Symbol BIN1

Synonyms BIN1; bridging integrator 1; AMPHL; myc box-dependent-interacting protein 1; AMPH2; amphiphysin II; SH3P9; amphiphysin-like protein; box dependant MYC interacting protein 1; box-dependent myc-interacting protein 1; MGC10367; DKFZp547F068;

Gene ID 274

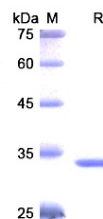
mRNA Refseq NM_004305

Protein Refseq NP_004296

MIM 601248

UniProt ID O00499

SDS-PAGE



 Tel: 1-631-559-9269 1-516-512-3133

 Email: info@creative-biomart.com  Fax: 1-631-938-8127

 45-1 Ramsey Road, Shirley, NY 11967, USA