

Recombinant Human BIN1 protein, GST-tagged

Cat. No. BIN1-10230H Lot. No. (See product label)

SPECIFICATION

Product Overview Recombinant Human BIN1 protein(1-439 aa), fused with N-terminal GST tag, was expressed in E. coli.

Species Human

Source E. coli

ProteinLength 1-439 aa

Form The purified protein was lyophilized from sterile phosphate-buffered saline (PBS: 58 mM Na₂HPO₄, 17 mM NaH₂PO₄, 68 mM NaCl, pH 8.0). Prior to lyophilization, 5% (w/v) trehalose and 5% (w/v) mannitol were incorporated as cryoprotective excipients. The protein was eluted with a buffer containing 100 mM reduced glutathione (GSH).

AASequence

```

MAEMGSKGVTAGKIASNVQKKLTRAQEKVLQKLGKADETKDEQFEQCVQNFNKQL
TEGTRLQKDLRXYLASVKAMHEASKKLNELQEVYEPDWGRDEANKIAENNDLLW
MDYHQKLVLDQALLTMDTYLGQFPDIKSRIAKRGRKLVLDYDSARHHYESLQTAKKKD
EAKIAKAEELIKAQKVFEEMNVDLQEELPSLWNSRVGFYVNTFQSIAGLEENFHKE
MSKLNQNLNDVLVGLEKQHGSNTFTVKAQPSDNAPAKGNKSPSPPDGSPAATPEIR
VNHEPEPAGGATPGATLPKSPSQPAEASEVAGGTQPAAGAQPGETAASEAASSS
LPAVVVETFPATVNGTVEGGSGAGRLDLPFGFMFKVQAQHDYATDTDELQLRAG
DVVLVIPFQNPPEEQDEGWLMGVKESDWNQHKLEKCRGVFPENFTEVP
    
```

 Tel: 1-631-559-9269 1-516-512-3133

 Email: info@creative-biomart.com  Fax: 1-631-938-8127

 45-1 Ramsey Road, Shirley, NY 11967, USA

Purity	65%, by SDS-PAGE.
Storage	Store at 2-8°C for 1-2 weeks. Aliquot and store at -20°C to -80°C for up to 3 months, reconstitution with sterile water and addition of an equal volume of glycerol. Avoid repeat freeze-thaw cycles.
Reconstitution	It is recommended that sterile water be added to the vial to prepare a stock solution of 0.25 ug/ul. Centrifuge the vial at 4°C before opening to recover the entire contents.

GENE INFORMATION

Gene Name	BIN1 bridging integrator 1 [Homo sapiens]
Official Symbol	BIN1
Synonyms	BIN1; bridging integrator 1; AMPHL; myc box-dependent-interacting protein 1; AMPH2; amphiphysin II; SH3P9; amphiphysin-like protein; box dependant MYC interacting protein 1; box-dependent myc-interacting protein 1; MGC10367; DKFZp547F068;
mRNA Refseq	NM_004305
Protein Refseq	NP_004296
MIM	601248
UniProt ID	O00499
Gene ID	274

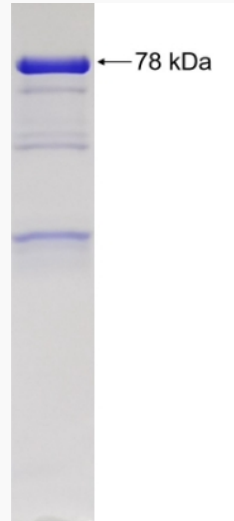
 Tel: 1-631-559-9269 1-516-512-3133

 Email: info@creative-biomart.com  Fax: 1-631-938-8127

 45-1 Ramsey Road, Shirley, NY 11967, USA



SDS-PAGE



Tel: 1-631-559-9269 1-516-512-3133

Email: info@creative-biomart.com Fax: 1-631-938-8127

45-1 Ramsey Road, Shirley, NY 11967, USA