

# Recombinant Human BIN1 Protein, Myc/DDK-tagged, C13 and N15-labeled

**Cat. No.** BIN1-1402H    **Lot. No.** (See product label)

## SPECIFICATION

<b>Product Overview</b>	BIN1 MS Standard C13 and N15-labeled recombinant protein (NP_647594) with a C-terminal MYC/DDK tag, was expressed in HEK293 cells.
<b>Species</b>	Human
<b>Source</b>	HEK293
<b>Description</b>	This gene encodes several isoforms of a nucleocytoplasmic adaptor protein, one of which was initially identified as a MYC-interacting protein with features of a tumor suppressor. Isoforms that are expressed in the central nervous system may be involved in synaptic vesicle endocytosis and may interact with dynamin, synaptojanin, endophilin, and clathrin. Isoforms that are expressed in muscle and ubiquitously expressed isoforms localize to the cytoplasm and nucleus and activate a caspase-independent apoptotic process. Studies in mouse suggest that this gene plays an important role in cardiac muscle development. Alternate splicing of the gene results in several transcript variants encoding different isoforms. Aberrant splice variants expressed in tumor cell lines have also been described.
<b>Molecular Mass</b>	59.8 kDa
<b>AA Sequence</b>	MAEMGSKGVTAGKIASNVQKKLTRAQEKVLQKLGKADETKDEQFEQCVQNFNKQL TEGTRLQKDLRITYLASVKAMHEASKKLNELQEVYEPDWPGRDEANKIAENNDLLW MDYHQKLVDQALLTMDTYLGQFPDIKSRIAKRGRKLVLDYDSARHHYESLQTAKKKD

 Tel: 1-631-559-9269    1-516-512-3133

 Email: [info@creative-biomart.com](mailto:info@creative-biomart.com)     Fax: 1-631-938-8127

 45-1 Ramsey Road, Shirley, NY 11967, USA

EAKIAKPVSLLEKAAPQWCQGKLAHLVAQTNLLRNQAEELIKAQKVFEEMNVDLQ  
 EELPSLWNSRVGFYVNTFQSIAGLEENFHKEMSKLNQNLNDVVLVBLEKQHGNSNTFT  
 VKAQPSDNAPAKGNKSPSPDGSPAATPEIRVNHEPEPAGGATPGATLPKSPSQFE  
 APGPFSEQASLLDLDFDPLPPVTSPVKAPTPSGQSIPWDLWEPTESPAGSLPSGEP  
 SAAEGTFAVSWPSQTAEPGPAQPAEASEVAGGTQPAAGAQEPGETAASEAASSSL  
 PAVVETFPATVNGTVEGGSGAGRLDLPFGFMFKVQAQHDYTATDDELQLKAGD  
 VVLVIPFQNPPEEQDEGWLMGVKESDWNQHKLEKCRGVFPENFTEVPTRTRPLE  
 QKLISEEDLAANDILDYKDDDDKV

<b>Purity</b>	> 80% as determined by SDS-PAGE and Coomassie blue staining
<b>Stability</b>	Stable for 3 months from receipt of products under proper storage and handling conditions.
<b>Storage</b>	Store at -80 centigrade. Avoid repeated freeze-thaw cycles.
<b>Concentration</b>	50 µg/mL as determined by BCA
<b>Storage Buffer</b>	100 mM glycine, 25 mM Tris-HCl, pH 7.3.

## GENE INFORMATION

<b>Gene Name</b>	BIN1 bridging integrator 1 [ Homo sapiens (human) ]
<b>Official Symbol</b>	BIN1
<b>Synonyms</b>	BIN1; bridging integrator 1; AMPHL; myc box-dependent-interacting protein 1; AMPH2; amphiphysin II; SH3P9; amphiphysin-like protein; box dependant MYC interacting protein 1; box-dependent myc-interacting protein 1; MGC10367; DKFZp547F068;

 Tel: 1-631-559-9269 1-516-512-3133

 Email: [info@creative-biomart.com](mailto:info@creative-biomart.com)  Fax: 1-631-938-8127

 45-1 Ramsey Road, Shirley, NY 11967, USA

**Gene ID** 274

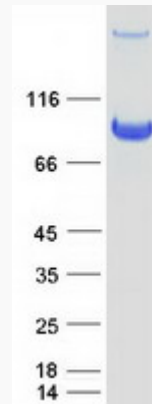
**mRNA Refseq** NM\_139344

**Protein Refseq** NP\_647594

**MIM** 601248

**UniProt ID** O00499

**SDS-PAGE**



 Tel: 1-631-559-9269 1-516-512-3133

 Email: [info@creative-biomart.com](mailto:info@creative-biomart.com)  Fax: 1-631-938-8127

 45-1 Ramsey Road, Shirley, NY 11967, USA