

Recombinant Human BIN1 Protein, GST-tagged

Cat. No. BIN1-221H Lot. No. (See product label)

SPECIFICATION

Product Overview	Human BIN1 full-length ORF (AAH04101, 1 a.a. - 439 a.a.) recombinant protein with GST-tag at N-terminal.
Species	Human
Source	Wheat Germ
Description	<p>This gene encodes several isoforms of a nucleocytoplasmic adaptor protein, one of which was initially identified as a MYC-interacting protein with features of a tumor suppressor. Isoforms that are expressed in the central nervous system may be involved in synaptic vesicle endocytosis and may interact with dynamin, synaptojanin, endophilin, and clathrin. Isoforms that are expressed in muscle and ubiquitously expressed isoforms localize to the cytoplasm and nucleus and activate a caspase-independent apoptotic process. Studies in mouse suggest that this gene plays an important role in cardiac muscle development. Alternate splicing of the gene results in ten transcript variants encoding different isoforms. Aberrant splice variants expressed in tumor cell lines have also been described.</p>
Form	50 mM Tris-HCl, 10 mM reduced Glutathione, pH=8.0 in the elution buffer.
Molecular Mass	74.03 kDa
AA Sequence	<p>MAEMGSKGVTAGKIASNVQKLLTRAQEKVLQKLGKADETKDEQFEQCVQNFNKQL TEGTRLQKDLRXYLASVKAMHEASKKLNELQEVYEPDWPGRDEANKIAENNDLLW MDYHQKLVDQALLTMDTYLGQFPDIKSRIAKRGRKLVVDYDSARHHYESLQTAKKKD</p>

 Tel: 1-631-559-9269 1-516-512-3133

 Email: info@creative-biomart.com  Fax: 1-631-938-8127

 45-1 Ramsey Road, Shirley, NY 11967, USA

EAKIAKAEELIKAQKVFEEMNVDLQEELPSLWNSRVGFYVNTFQSIAGLEENFHKE
 MSKLNQNLNDVLVBLEKQHGSNTFTVKAQPSDNAPAKGNKSPSPDGSPAATPEIR
 VNHEPEPAGGATPGATLPKSPSQPAEASEVAGGTQPAAGAQPGETAASEAASSS
 LPAVVVETFPATVNGTVEGGSGAGRLDLPFGFMFKVQAQHDYTATDDELQLRAG
 DVVLVIPFQNPEEQDEGWLMGVKESDWNQHKLEKCRGVFPENFTERVP

Notes	Best use within three months from the date of receipt of this protein.
Storage	Store at -80 centigrade. Aliquot to avoid repeated freezing and thawing.
Storage Buffer	50 mM Tris-HCl, 10 mM reduced Glutathione, pH=8.0 in the elution buffer.

GENE INFORMATION

Gene Name	BIN1 bridging integrator 1 [Homo sapiens]
Official Symbol	BIN1
Synonyms	BIN1; bridging integrator 1; AMPHL; myc box-dependent-interacting protein 1; AMPH2; amphiphysin II; SH3P9; amphiphysin-like protein; box dependant MYC interacting protein 1; box-dependent myc-interacting protein 1; MGC10367; DKFZp547F068;
Gene ID	274
mRNA Refseq	NM_004305
Protein Refseq	NP_004296
MIM	601248

 Tel: 1-631-559-9269 1-516-512-3133

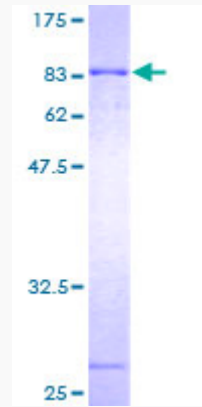
 Email: info@creative-biomart.com  Fax: 1-631-938-8127

 45-1 Ramsey Road, Shirley, NY 11967, USA



UniProt ID

O00499



Tel: 1-631-559-9269 1-516-512-3133

Email: info@creative-biomart.com Fax: 1-631-938-8127

45-1 Ramsey Road, Shirley, NY 11967, USA