

Recombinant Human BIN1 Protein, Myc/DDK-tagged, C13 and N15-labeled

Cat. No. BIN1-4075H **Lot. No.** (See product label)

SPECIFICATION

Product Overview	BIN1 MS Standard C13 and N15-labeled recombinant protein (NP_004296) with a C-terminal MYC/DDK tag, was expressed in HEK293 cells.
Species	Human
Source	HEK293
Description	This gene encodes several isoforms of a nucleocytoplasmic adaptor protein, one of which was initially identified as a MYC-interacting protein with features of a tumor suppressor. Isoforms that are expressed in the central nervous system may be involved in synaptic vesicle endocytosis and may interact with dynamin, synaptojanin, endophilin, and clathrin. Isoforms that are expressed in muscle and ubiquitously expressed isoforms localize to the cytoplasm and nucleus and activate a caspase-independent apoptotic process. Studies in mouse suggest that this gene plays an important role in cardiac muscle development. Alternate splicing of the gene results in several transcript variants encoding different isoforms. Aberrant splice variants expressed in tumor cell lines have also been described.
Molecular Mass	50 kDa
AA Sequence	MAEMGSKGVTAGKIASNVQKKLTRAQEKVLQKLGKADETKDEQFEQCVQNFNKQL TEGTRLQKDLRITYLASVKAMHEASKKLNELQEVYEPDWPGRDEANKIAENNDLLW MDYHQKLVLDQALLTMDTYLGQFPDIKSRIAKRGRKLVLDYDSARHHYESLQTAKKKD

 Tel: 1-631-559-9269 1-516-512-3133

 Email: info@creative-biomart.com  Fax: 1-631-938-8127

 45-1 Ramsey Road, Shirley, NY 11967, USA

EAKIAKAEELIKAQKVFEEMNVDLQEELPSLWNSRVGFYVNTFQSIAGLEENFHKE
 MSKLNQNLNDVVLVLEKQHGSNFTFTVKAQPRKKSFLSRLRRKKNSDNAPAKGNK
 SPSPPDGSPAATPEIRVNHEPEPAGGATPGATLPKSPSQPAEASEVAGGTQPAAGA
 QEPGETAASEAASSSLPAVVVETFPATVNGTVEGGSGAGRLDLPFGFMFKVQAQH
 DYTATDTDELQLKAGDVVLVIPFQNPEEQDEGWLMGVKESDWNQHQKELEKCRGVF
 PENFTRVPTRTRPLEQKLISEEDLAANDILDYKDDDDKV

Purity > 80% as determined by SDS-PAGE and Coomassie blue staining

Stability Stable for 3 months from receipt of products under proper storage and handling conditions.

Storage Store at -80 centigrade. Avoid repeated freeze-thaw cycles.

Concentration 50 µg/mL as determined by BCA

Storage Buffer 100 mM glycine, 25 mM Tris-HCl, pH 7.3.

GENE INFORMATION

Gene Name BIN1 bridging integrator 1 [Homo sapiens (human)]

Official Symbol BIN1

Synonyms BIN1; bridging integrator 1; AMPHL; myc box-dependent-interacting protein 1; AMPH2; amphiphysin II; SH3P9; amphiphysin-like protein; box dependant MYC interacting protein 1; box-dependent myc-interacting protein 1; MGC10367; DKFZp547F068;

Gene ID 274

 Tel: 1-631-559-9269 1-516-512-3133

 Email: info@creative-biomart.com  Fax: 1-631-938-8127

 45-1 Ramsey Road, Shirley, NY 11967, USA

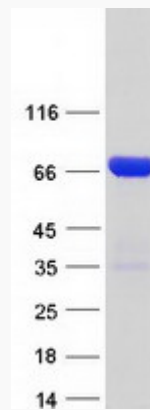
mRNA Refseq [NM_004305](#)

Protein Refseq [NP_004296](#)

MIM [601248](#)

UniProt ID [O00499](#)

SDS-PAGE



 Tel: 1-631-559-9269 1-516-512-3133

 Email: info@creative-biomart.com  Fax: 1-631-938-8127

 45-1 Ramsey Road, Shirley, NY 11967, USA