

Recombinant Human BIN1 protein, His-tagged

Cat. No. BIN1-7855H Lot. No. (See product label)

SPECIFICATION

Product Overview	Recombinant Human BIN1 protein(1-439 aa), fused with N-terminal His tag, was expressed in E. coli.
Species	Human
Source	E. coli
ProteinLength	1-439 aa
Form	The purified protein was lyophilized from sterile phosphate-buffered saline (PBS: 58 mM Na ₂ HPO ₄ , 17 mM NaH ₂ PO ₄ , 68 mM NaCl, pH 7.4). Prior to lyophilization, 5% (w/v) trehalose and 5% (w/v) mannitol were incorporated as cryoprotective excipients. The protein was eluted with a buffer containing 300 mM imidazole.
AASequence	MAEMGSKGVTAGKIASNVQKKLTRAQEKVLQKLGKADETKDEQFEQCVQNFNKQL TEGTRLQKDLRXYLASVKAMHEASKKLNELQEVYEPDWPGRDEANKIAENNDLLW MDYHQKLVLDQALLTMDTYLGQFPDIKSRIAKRGRKLVYDYSARHHYESLQTAKKKD EAKIAKAEELIKAQKVFEEMNVDLQEELPSLWNSRVGFYVNTFQSIAGLEENFHKE MSKLNQNLNDVLVBLEKQHGNSNTFTVKAQPSDNAPAKGNKSPSPDGSPAATPEIR VNHEPEPAGGATPGATLPKSPSQPAEASEVAGGTQPAAGAQPGETAASEAASSS LPAVVVETFPATVNGTVEGGSGAGRLDLPFGFMFKVQAQHDYTATDTDELQLRAG DVVLVIPFQNPPEEQDEGWLMGVKESDWNQHKLEKCRGVFPENFTEVP
Purity	85%, by SDS-PAGE.

 Tel: 1-631-559-9269 1-516-512-3133

 Email: info@creative-biomart.com  Fax: 1-631-938-8127

 45-1 Ramsey Road, Shirley, NY 11967, USA

Storage Store at 2-8°C for 1-2 weeks. Aliquot and store at -20°C to -80°C for up to 3 months, reconstitution with sterile water and addition of an equal volume of glycerol. Avoid repeat freeze-thaw cycles.

Reconstitution It is recommended that sterile water be added to the vial to prepare a stock solution of 0.25 ug/ul. Centrifuge the vial at 4°C before opening to recover the entire contents.

GENE INFORMATION

Gene Name BIN1 bridging integrator 1 [Homo sapiens]

Official Symbol BIN1

Synonyms BIN1; bridging integrator 1; AMPHL; myc box-dependent-interacting protein 1; AMPH2; amphiphysin II; SH3P9; amphiphysin-like protein; box dependant MYC interacting protein 1; box-dependent myc-interacting protein 1; MGC10367; DKFZp547F068;

mRNA Refseq [NM_004305](#)

Protein Refseq [NP_004296](#)

MIM [601248](#)

UniProt ID [O00499](#)

Gene ID [274](#)

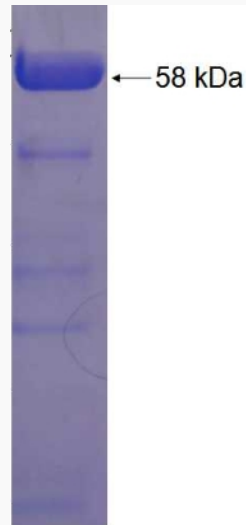
 Tel: 1-631-559-9269 1-516-512-3133

 Email: info@creative-biomart.com  Fax: 1-631-938-8127

 45-1 Ramsey Road, Shirley, NY 11967, USA



SDS-PAGE



Tel: 1-631-559-9269 1-516-512-3133

Email: info@creative-biomart.com Fax: 1-631-938-8127

45-1 Ramsey Road, Shirley, NY 11967, USA