

## Recombinant Human BIN3 Protein, GST-tagged

Cat. No. BIN3-223H Lot. No. (See product label)

### SPECIFICATION

<b>Product Overview</b>	Human BIN3 full-length ORF ( AAH01223, 1 a.a. - 199 a.a.) recombinant protein with GST-tag at N-terminal.
<b>Species</b>	Human
<b>Source</b>	Wheat Germ
<b>Description</b>	The product of this gene is a member of the BAR domain protein family. The encoded protein is comprised solely of a BAR domain which is predicted to form coiled-coil structures and proposed to mediate dimerization, sense and induce membrane curvature, and bind small GTPases. BAR domain proteins have been implicated in endocytosis, intracellular transport, and a diverse set of other processes.
<b>Form</b>	50 mM Tris-HCl, 10 mM reduced Glutathione, pH=8.0 in the elution buffer.
<b>Molecular Mass</b>	47.63 kDa
<b>AA Sequence</b>	MSKSAVKISLDLLSNPLCEQDQDLLNMVTALDTAMKRMDAFNQEKVNQIQKTVIEPL KKFGSVFPSLNMVAVKRREQALQDYRRLQAKVEKYEEKEKTGPVLAKLHQAREELRP VREDFEAKNRQLLEEMPRFYGSRLDYFQPSFESLIRAQVVYYSEMCHKIFGDLSHQLD QPGHSDEQRERENEAKLSELRALSIVADD
<b>Notes</b>	Best use within three months from the date of receipt of this protein.
<b>Storage</b>	Store at -80 centigrade. Aliquot to avoid repeated freezing and thawing.

 Tel: 1-631-559-9269 1-516-512-3133

 Email: [info@creative-biomart.com](mailto:info@creative-biomart.com)  Fax: 1-631-938-8127

 45-1 Ramsey Road, Shirley, NY 11967, USA

**Storage Buffer** 50 mM Tris-HCl, 10 mM reduced Glutathione, pH=8.0 in the elution buffer.

## GENE INFORMATION

**Gene Name** BIN3 bridging integrator 3 [ Homo sapiens ]

**Official Symbol** BIN3

**Synonyms** BIN3; bridging integrator 3; MGC14978;

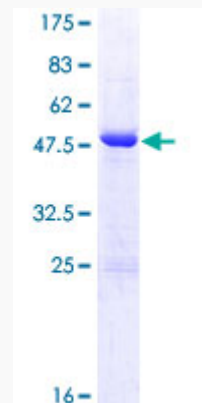
**Gene ID** 55909

**mRNA Refseq** NM\_018688

**Protein Refseq** NP\_061158

**MIM** 606396

**UniProt ID** Q9NQY0



 Tel: 1-631-559-9269 1-516-512-3133

 Email: [info@creative-biomart.com](mailto:info@creative-biomart.com)  Fax: 1-631-938-8127

 45-1 Ramsey Road, Shirley, NY 11967, USA