

Recombinant Human BIN3 Protein, GST-tagged

Cat. No. BIN3-224H Lot. No. (See product label)

SPECIFICATION

Product Overview	Human BIN3 partial ORF (NP_061158, 154 a.a. - 253 a.a.) recombinant protein with GST-tag at N-terminal.
Species	Human
Source	Wheat Germ
Description	The product of this gene is a member of the BAR domain protein family. The encoded protein is comprised solely of a BAR domain which is predicted to form coiled-coil structures and proposed to mediate dimerization, sense and induce membrane curvature, and bind small GTPases. BAR domain proteins have been implicated in endocytosis, intracellular transport, and a diverse set of other processes.
Form	50 mM Tris-HCl, 10 mM reduced Glutathione, pH=8.0 in the elution buffer.
Molecular Mass	36.74 kDa
AA Sequence	VLAKLHQAREELRPVREDFEAKNRQLLEEMPRFYGSRLDYFQPSFESLIRAQVVYYS EMHKIFGDLSHQLDQPGHSDEQRERENEAKLSELRALSI VADD
Notes	Best use within three months from the date of receipt of this protein.
Storage	Store at -80 centigrade. Aliquot to avoid repeated freezing and thawing.
Storage Buffer	50 mM Tris-HCl, 10 mM reduced Glutathione, pH=8.0 in the elution buffer.

 Tel: 1-631-559-9269 1-516-512-3133

 Email: info@creative-biomart.com  Fax: 1-631-938-8127

 45-1 Ramsey Road, Shirley, NY 11967, USA

GENE INFORMATION

Gene Name BIN3 bridging integrator 3 [Homo sapiens]

Official Symbol BIN3

Synonyms BIN3; bridging integrator 3; MGC14978;

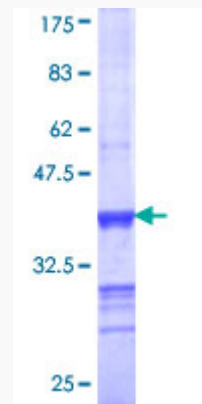
Gene ID 55909

mRNA Refseq NM_018688

Protein Refseq NP_061158

MIM 606396

UniProt ID Q9NQY0



 Tel: 1-631-559-9269 1-516-512-3133

 Email: info@creative-biomart.com  Fax: 1-631-938-8127

 45-1 Ramsey Road, Shirley, NY 11967, USA