

# Recombinant *Klebsiella Oxytoca* BLA Protein (25-293 aa), His-SUMO-tagged

**Cat. No.** BLA-1785K    **Lot. No.** (See product label)

## SPECIFICATION

**Product Overview**      Recombinant *Klebsiella Oxytoca* BLA Protein (25-293 aa) is produced by *E. coli* expression system. This protein is fused with a 6xHis-SUMO tag at the N-terminal.  
Protein Description: Full Length of Mature Protein.

**Species**      *Klebsiella Oxytoca*

**Source**      *E. coli*

**ProteinLength**      25-293 aa

**Description**      Hydrolyzes carbapenems, penicillins, cephalosporins and aztreonam with varying efficiency.

**Form**      Tris-based buffer, 50% glycerol

**Molecular Mass**      44.5 kDa

**AA Sequence**      LTNLVAEPFAKLEQDFGGSIGVYAMDTGSGATVSYRAEERFPLCSSFKGFLAAAVLA  
RSQQQAGLLDTPIRYGNALVPWSPISEKYLTTGMTVAELSAAAVQYSDNAAANLLL  
KELGGPAGLTAFMRSIGDITFRLDRWELELNSAIPGDARDTSSPRAVTESLQKLTGLG  
SALAAPQRQQFVDWLKGNTTGNHRIRAAVPADWAVGDKTGTCGVYGTANDYAVV  
WPTGRAPIVLAVYTRAPNKDDKHSEAVIAAAAARLALGLGVNGQ

**Purity**      > 90% as determined by SDS-PAGE.

 Tel: 1-631-559-9269    1-516-512-3133

 Email: [info@creative-biomart.com](mailto:info@creative-biomart.com)     Fax: 1-631-938-8127

 45-1 Ramsey Road, Shirley, NY 11967, USA

**Notes** Repeated freezing and thawing is not recommended. Store working aliquots at 4 centigrade for up to one week.

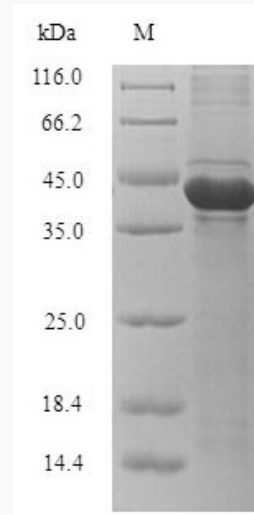
**Storage** The shelf life is related to many factors, storage state, buffer ingredients, storage temperature and the stability of the protein itself. Generally, the shelf life of liquid form is 6 months at -20 centigrade/-80 centigrade. The shelf life of lyophilized form is 12 months at -20 centigrade/-80 centigrade.

**Concentration** A hardcopy of COA with reconstitution instruction is sent along with the products.

## GENE INFORMATION

**Synonyms** bla; Carbapenem-hydrolyzing beta-lactamase KPC-2;

**UniProt ID** [Q848S6](https://www.uniprot.org/entry/Q848S6)



(Tris-Glycine gel) Discontinuous SDS-PAGE (reduced) with 5% enrichment gel and 15% separation gel.

 Tel: 1-631-559-9269 1-516-512-3133

 Email: [info@creative-biomart.com](mailto:info@creative-biomart.com)  Fax: 1-631-938-8127

 45-1 Ramsey Road, Shirley, NY 11967, USA