

Recombinant Mouse BLM Protein (684-859 aa), His-Myc-tagged

Cat. No. BLM-2206M Lot. No. (See product label)

SPECIFICATION

Product Overview	Recombinant Mouse BLM Protein (684-859 aa) is produced by E. coli expression system. This protein is fused with a 10xHis tag at the N-terminal and a Myc tag at the C-terminal. Research Area: Neuroscience. Protein Description: Partial.
Species	Mouse
Source	E.coli
ProteinLength	684-859 aa
Description	Participates in DNA replication and repair. Exhibits a magnesium-dependent ATP-dependent DNA-helicase activity that unwinds single- and double-stranded DNA in a 3'-5' direction. Involved in 5'-end resection of DNA during double-strand break (DSB) repair: unwinds DNA and recruits DNA2 which mediates the cleavage of 5'-ssDNA. Negatively regulates sister chromatid exchange (SCE).
Form	Tris-based buffer,50% glycerol
Molecular Mass	24.7 kDa
AA Sequence	INAALLGEDCFILMPTGGGKSLCYQLPACVSPGVTIVISPLRSLIVDQVQKLTSFDIPAT YLTGDKTDSEAANIYQLSKKDPIIKLLYVTPEKVCASNRLISTLENLYERKLLARFVID EAHCVSQWGHDFRQDYKRMNMLRQKFPSVPMALTATANPRVQKDILTQLKILRPQ
Purity	> 90% as determined by SDS-PAGE.

 Tel: 1-631-559-9269 1-516-512-3133

 Email: info@creative-biomart.com  Fax: 1-631-938-8127

 45-1 Ramsey Road, Shirley, NY 11967, USA

Notes	Repeated freezing and thawing is not recommended. Store working aliquots at 4 centigrade for up to one week.
Storage	The shelf life is related to many factors, storage state, buffer ingredients, storage temperature and the stability of the protein itself. Generally, the shelf life of liquid form is 6 months at -20 centigrade/-80 centigrade. The shelf life of lyophilized form is 12 months at -20 centigrade/-80 centigrade.
Concentration	A hardcopy of COA will be sent along with the products. Please refer to it for detailed information.

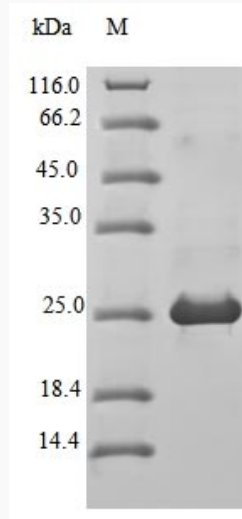
GENE INFORMATION

Gene Name	Blm Bloom syndrome, RecQ helicase-like [<i>Mus musculus</i>]
Official Symbol	BLM
Synonyms	BLM; Bloom syndrome protein homolog; mBLM; recQ helicase homolog; Bloom syndrome homolog;
Gene ID	12144
mRNA Refseq	NM_001042527
Protein Refseq	NP_001035992
UniProt ID	O88700

 Tel: 1-631-559-9269 1-516-512-3133

 Email: info@creative-biomart.com  Fax: 1-631-938-8127

 45-1 Ramsey Road, Shirley, NY 11967, USA



(Tris-Glycine gel) Discontinuous SDS-PAGE (reduced) with 5% enrichment gel and 15% separation gel.

 Tel: 1-631-559-9269 1-516-512-3133

 Email: info@creative-biomart.com  Fax: 1-631-938-8127

 45-1 Ramsey Road, Shirley, NY 11967, USA