

Recombinant Human BLM protein, His-tagged

Cat. No. BLM-675H Lot. No. (See product label)

SPECIFICATION

Product Overview	Recombinant Human BLM protein(P54132)(877-1024aa), fused with N-terminal His tag, was expressed in E.coli.
Species	Human
Source	E.coli
ProteinLength	877-1024aa
Form	If the delivery form is liquid, the default storage buffer is Tris/PBS-based buffer, 5%-50% glycerol. If the delivery form is lyophilized powder, the buffer before lyophilization is Tris/PBS-based buffer, 6% Trehalose, pH 8.0.
Molecular Mass	23.0 kDa
Purity	Greater than 90% as determined by SDS-PAGE.
Storage	Store at -20°C/-80°C upon receipt, aliquoting is necessary for mutiple use. Avoid repeated freeze-thaw cycles.
Reconstitution	We recommend that this vial be briefly centrifuged prior to opening to bring the contents to the bottom. Please reconstitute protein in deionized sterile water to a concentration of 0.1-1.0 mg/mL. We recommend to add 5-50% of glycerol (final concentration) and aliquot for long-term storage at -20°C/-80°C.

 Tel: 1-631-559-9269 1-516-512-3133

 Email: info@creative-biomart.com  Fax: 1-631-938-8127

 45-1 Ramsey Road, Shirley, NY 11967, USA

AA Sequence DCLEWIRKHHHPYDSGIYCLSRRECDTMADTLQRDGLAALAYHAGLSDSARDEVQQ
KWINQDGCQVICATIAFGMGIDKPDVRFVIHASLPKSVEGYQESGRAGRIDGEISHC
LLFYTYHDVTRLKRLIMMEKDGNNHHTRETHFNNLY

GENE INFORMATION

Gene Name BLM Bloom syndrome, RecQ helicase-like [Homo sapiens]

Official Symbol BLM

Synonyms BLM; Bloom syndrome, RecQ helicase-like; Bloom syndrome; Bloom syndrome protein; BS; RECQ2; RECQL3; recQ protein-like 3; DNA helicase, RecQ-like type 2; RECQL2; MGC126616; MGC131618; MGC131620;

Gene ID 641

mRNA Refseq NM_000057

Protein Refseq NP_000048

MIM 604610

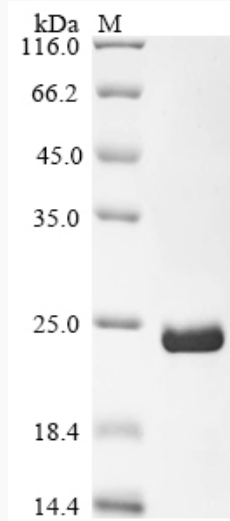
UniProt ID P54132

 Tel: 1-631-559-9269 1-516-512-3133

 Email: info@creative-biomart.com  Fax: 1-631-938-8127

 45-1 Ramsey Road, Shirley, NY 11967, USA

SDS-PAGE



 Tel: 1-631-559-9269 1-516-512-3133

 Email: info@creative-biomart.com  Fax: 1-631-938-8127

 45-1 Ramsey Road, Shirley, NY 11967, USA