

Recombinant Human BLNK Protein (Met1-Ser456), C-His tagged

Cat. No. BLNK-0735H **Lot. No.** (See product label)

SPECIFICATION

Product Overview	Recombinant human BLNK (Met1-Ser456) fused with the C-terminal His tag was expressed in E. coli.
Species	Human
Source	E.coli
ProteinLength	Met1-Ser456
Form	Lyophilized powder/frozen liquid
Molecular Mass	50.16 kDa
Purity	>90% as determined by SDS-PAGE.
Notes	For research use only.
Storage	Use a manual defrost freezer and avoid repeated freeze thaw cycles. Store at 2 to 8 centigrade for one week. Store at -20 to -80 centigrade for twelve months from the date of receipt.
Storage Buffer	Supplied as solution form in PBS or lyophilized from PBS.
Reconstitution	Reconstitute in sterile water for a stock solution.

 Tel: 1-631-559-9269 1-516-512-3133

 Email: info@creative-biomart.com  Fax: 1-631-938-8127

 45-1 Ramsey Road, Shirley, NY 11967, USA

Shipping They are shipped out with dry ice/blue ice unless customers require otherwise.

GENE INFORMATION

Gene Name [BLNK B-cell linker \[Homo sapiens \(human\) \]](#)

Official Symbol [BLNK](#)

Synonyms

BLNK; B-cell linker; B-cell linker protein; B cell adaptor containing SH2 domain; B cell activation; B cell adapter containing a SH2 domain protein; BASH; bca; BLNK s; Ly57; SLP 65; SLP65; Src homology [SH2] domain containing leukocyte protein of 65 kD; B-cell activation; B cell linker protein; cytoplasmic adapter protein; B-cell adapter containing a SH2 domain protein; B-cell adapter containing a Src homology 2 domain protein; Src homology 2 domain-containing leukocyte protein of 65 kDa; Src homology [SH2] domain-containing leukocyte protein of 65 kD; AGM4; LY57; BLNK-S; SLP-65; MGC111051;

Gene ID [29760](#)

mRNA Refseq [NM_001114094](#)

Protein Refseq [NP_001107566](#)

MIM [604515](#)

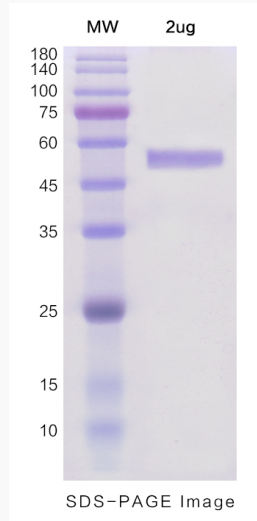
UniProt ID [Q8WV28](#)

 Tel: 1-631-559-9269 1-516-512-3133

 Email: info@creative-biomart.com  Fax: 1-631-938-8127

 45-1 Ramsey Road, Shirley, NY 11967, USA

SDS-PAGE



 Tel: 1-631-559-9269 1-516-512-3133

 Email: info@creative-biomart.com  Fax: 1-631-938-8127

 45-1 Ramsey Road, Shirley, NY 11967, USA