

Recombinant Human BLOC1S2 Protein, Myc/DDK-tagged, C13 and N15-labeled

Cat. No. BLOC1S2-5521H **Lot. No.** (See product label)

SPECIFICATION

Product Overview	BLOC1S2 MS Standard C13 and N15-labeled recombinant protein (NP_001001342) with a C-terminal MYC/DDK tag, was expressed in HEK293 cells.
Species	Human
Source	HEK293
Description	This gene encodes a protein with multiple functions. The encoded protein has been found in association with the centrosome, shown to co-localize with gamma-tubulin, and also found to be one of the proteins in the BLOC-1 complex which functions in the formation of lysosome-related organelles. A pseudogene of this gene is located on the X chromosome. Alternative splicing results in multiple transcript variants.
Molecular Mass	11.5 kDa
AA Sequence	MFSKMATYLTGELTATSEDYKLENNMNKLTSLKYLEMKDIAINISRNKDLNQKYAGL QPYLDQINVIEEQVAALEQAAYKLDAYSKKLEAKYKKLEKRTTRTRPLEQKLISEEDLA ANDILDYKDDDDKV
Purity	> 80% as determined by SDS-PAGE and Coomassie blue staining
Stability	Stable for 3 months from receipt of products under proper storage and handling conditions.

 Tel: 1-631-559-9269 1-516-512-3133

 Email: info@creative-biomart.com  Fax: 1-631-938-8127

 45-1 Ramsey Road, Shirley, NY 11967, USA

Storage	Store at -80 centigrade. Avoid repeated freeze-thaw cycles.
Concentration	50 µg/mL as determined by BCA
Storage Buffer	100 mM glycine, 25 mM Tris-HCl, pH 7.3.

GENE INFORMATION

Gene Name	BLOC1S2 biogenesis of lysosomal organelles complex 1 subunit 2 [Homo sapiens (human)]
Official Symbol	BLOC1S2
Synonyms	BLOC1S2; biogenesis of lysosomal organelles complex-1, subunit 2; biogenesis of lysosome-related organelles complex 1 subunit 2; Biogenesis of Lysosome related Organelles complex 1 Subunit 2; BLOS2; centrosome protein oncogene; FLJ30135; MGC10120; BLOC-1 subunit 2; centrosomal 10 kDa protein; centrosome-associated protein; RP11-316M21.4;
Gene ID	282991
mRNA Refseq	NM_001001342
Protein Refseq	NP_001001342
MIM	609768
UniProt ID	Q6QNY1

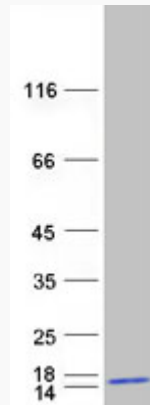
 Tel: 1-631-559-9269 1-516-512-3133

 Email: info@creative-biomart.com  Fax: 1-631-938-8127

 45-1 Ramsey Road, Shirley, NY 11967, USA



SDS-PAGE



Tel: 1-631-559-9269 1-516-512-3133

Email: info@creative-biomart.com Fax: 1-631-938-8127

45-1 Ramsey Road, Shirley, NY 11967, USA