

Recombinant Human BLOC1S2 protein, GST-tagged

Cat. No. BLOC1S2-7382H Lot. No. (See product label)

SPECIFICATION

Product Overview	Recombinant Human BLOC1S2 protein(1-99 aa), fused with N-terminal GST tag, was expressed in E.coli.
Species	Human
Source	E.coli
ProteinLength	1-99 aa
Form	The purified protein was lyophilized from sterile phosphate-buffered saline (PBS: 58 mM Na ₂ HPO ₄ , 17 mM NaH ₂ PO ₄ , 68 mM NaCl, pH 8.0). Prior to lyophilization, 5% (w/v) trehalose and 5% (w/v) mannitol were incorporated as cryoprotective excipients.
AASequence	MFSKMATYLTGELTATSEDYKLENNMKNKLTSLKYLEMKDIAINISRNLKDLNQKYAGL QPYLDQINVIEEQVAALEQAAYKLDAYSKKLEAKYKKLEKR
Purity	90%, by SDS-PAGE with Coomassie Brilliant Blue staining.
Storage	Store at 2-8°C for 1-2 weeks. Aliquot and store at -20°C to -80°C for up to 3 months, reconstitution with sterile water and addition of an equal volume of glycerol. Avoid repeat freeze-thaw cycles.
Reconstitution	Dissolve the product in 200 µl sterile water to achieve a working concentration of 0.25 g/

 Tel: 1-631-559-9269 1-516-512-3133

 Email: info@creative-biomart.com  Fax: 1-631-938-8127

 45-1 Ramsey Road, Shirley, NY 11967, USA

µl. If experimental compatibility allows, mix the aqueous solution with an equal volume of glycerol (1:1 ratio) after initial reconstitution.

GENE INFORMATION

Gene Name BLOC1S2 biogenesis of lysosomal organelles complex-1, subunit 2 [Homo sapiens]

Official Symbol BLOC1S2

Synonyms BLOC1S2; biogenesis of lysosomal organelles complex-1, subunit 2; biogenesis of lysosome-related organelles complex 1 subunit 2; Biogenesis of Lysosome related Organelles complex 1 Subunit 2; BLOS2; centrosome protein oncogene; FLJ30135; MGC10120; BLOC-1 subunit 2; centrosomal 10 kDa protein; centrosome-associated protein; RP11-316M21.4;

Gene ID 282991

mRNA Refseq NM_173809

Protein Refseq NP_776170

MIM 609768

UniProt ID Q6QNY1

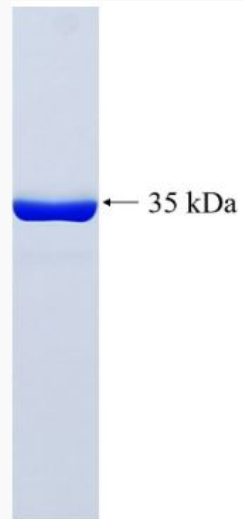
 Tel: 1-631-559-9269 1-516-512-3133

 Email: info@creative-biomart.com  Fax: 1-631-938-8127

 45-1 Ramsey Road, Shirley, NY 11967, USA



SDS-PAGE



Tel: 1-631-559-9269 1-516-512-3133

Email: info@creative-biomart.com Fax: 1-631-938-8127

45-1 Ramsey Road, Shirley, NY 11967, USA