

Recombinant Human BLOC1S4 Protein, GST-tagged

Cat. No. BLOC1S4-1574H Lot. No. (See product label)

SPECIFICATION

Product Overview	Human CNO full-length ORF (AAH67815.1, 1 a.a. - 217 a.a.) recombinant protein with GST-tag at N-terminal.
Species	Human
Source	Wheat Germ
Description	This intronless gene encodes a protein that may play a role in organelle biogenesis associated with melanosomes, platelet dense granules, and lysosomes. A similar protein in mouse is a component of a protein complex termed biogenesis of lysosome-related organelles complex 1 (BLOC-1), and is a model for Hermansky-Pudlak syndrome. The encoded protein may play a role in intracellular vesicular trafficking. [provided by RefSeq, Jul 2008]
Molecular Mass	49.8 kDa
AA Sequence	MEGSFSDGGALPEGLAEEAEPQGAAWSGDSGTVSQSHSSASGPWEDEGAEDGAP GRDLPLHRRAAAGYAAACLLPGAGARPEVEALDASLEDLLTRVDEFVGMMLDRGDS SHVVSEGVPRIHAKAAEMRRIYSRIDRLEAFVRMVGGRRVARMEEQVTKAE AELGTF PRAFKLLHTMNVPSLFSKSAPSRPQQAGYEAPVLFRTEDYFPCCSERPQL
Applications	Enzyme-linked Immunoabsorbent Assay Western Blot (Recombinant protein) Antibody Production Protein Array

 Tel: 1-631-559-9269 1-516-512-3133

 Email: info@creative-biomart.com  Fax: 1-631-938-8127

 45-1 Ramsey Road, Shirley, NY 11967, USA

Notes	Best use within three months from the date of receipt of this protein.
Storage	Store at -80 centigrade. Aliquot to avoid repeated freezing and thawing.
Storage Buffer	50 mM Tris-HCl, 10 mM reduced Glutathione, pH=8.0 in the elution buffer.
GENE INFORMATION	
Gene Name	BLOC1S4 biogenesis of lysosomal organelles complex 1 subunit 4 [Homo sapiens (human)]
Official Symbol	BLOC1S4
Synonyms	CNO; cappuccino homolog (mouse); protein cappuccino homolog; BCAS4L; FLJ11230; BLOC1S4; biogenesis of lysosomal organelles complex 1 subunit 4
Gene ID	55330
mRNA Refseq	NM_018366
Protein Refseq	NP_060836
MIM	605695
UniProt ID	Q9NUP1

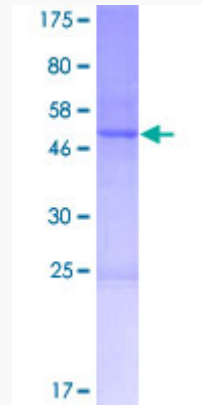
 Tel: 1-631-559-9269 1-516-512-3133

 Email: info@creative-biomart.com  Fax: 1-631-938-8127

 45-1 Ramsey Road, Shirley, NY 11967, USA

Quality Control

Testing:



12.5% SDS-PAGE Stained with Coomassie Blue.

 Tel: 1-631-559-9269 1-516-512-3133

 Email: info@creative-biomart.com  Fax: 1-631-938-8127

 45-1 Ramsey Road, Shirley, NY 11967, USA