

Recombinant Human BLVRA Protein, Myc/DDK-tagged, C13 and N15-labeled

Cat. No. BLVRA-5804H **Lot. No.** (See product label)

SPECIFICATION

Product Overview	BLVRA MS Standard C13 and N15-labeled recombinant protein (NP_000703) with a C-terminal MYC/DDK tag, was expressed in HEK293 cells.
Species	Human
Source	HEK293
Description	The protein encoded by this gene belongs to the biliverdin reductase family, members of which catalyze the conversion of biliverdin to bilirubin in the presence of NADPH or NADH. Mutations in this gene are associated with hyperbiliverdinemia. Alternatively spliced transcript variants have been found for this gene.
Molecular Mass	33.4 kDa
AA Sequence	MNTEPERKFGVVVGVGRAGSVRMRDLRNPHPSAFLNLIGFVSRRELGSIDGVQQ ISLEDALSSQEVEVAYICSESSSHEDYIRQFLNAGKHVLEYPMTLSLAAAQELWELA EQKGKVSHEEHVELLMEEFAFLKKEVVGKDLLKGSLLFTAGPLEEERFGFPAFSGIS RLTWLVSLFGELSLVSATLEERKEDQYMKMTVCLETEKKSPLSWIEEKGPGLKRN YLSFHFKSGSLENVNVGVNKNIFLKDQNFVQKLLGQFSEKELAAEKKRILHCLGLA EEIQKYCCSRKTRTRPLEQKLISEEDLAANDILDYKDDDDKV
Purity	> 80% as determined by SDS-PAGE and Coomassie blue staining
Stability	Stable for 3 months from receipt of products under proper storage and handling

 Tel: 1-631-559-9269 1-516-512-3133

 Email: info@creative-biomart.com  Fax: 1-631-938-8127

 45-1 Ramsey Road, Shirley, NY 11967, USA

conditions.

Storage Store at -80 centigrade. Avoid repeated freeze-thaw cycles.

Concentration 50 µg/mL as determined by BCA

Storage Buffer 100 mM glycine, 25 mM Tris-HCl, pH 7.3.

GENE INFORMATION

Gene Name BLVRA biliverdin reductase A [Homo sapiens (human)]

Official Symbol BLVRA

Synonyms BLVRA; biliverdin reductase A; BLVR; BVR A; biliverdin-IX alpha-reductase; BVR; BVRA;

Gene ID 644

mRNA Refseq NM_000712

Protein Refseq NP_000703

MIM 109750

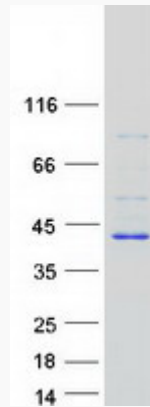
UniProt ID P53004

 Tel: 1-631-559-9269 1-516-512-3133

 Email: info@creative-biomart.com  Fax: 1-631-938-8127

 45-1 Ramsey Road, Shirley, NY 11967, USA

SDS-PAGE



 Tel: 1-631-559-9269 1-516-512-3133

 Email: info@creative-biomart.com  Fax: 1-631-938-8127

 45-1 Ramsey Road, Shirley, NY 11967, USA