

## Active Recombinant Full Length Human BLVRB Protein

Cat. No. BLVRB-07H Lot. No. (See product label)

### SPECIFICATION

<b>Product Overview</b>	Active Recombinant Full Length Human BLVRB Protein (1-206 aa) was expressed in E.coli.
<b>Species</b>	Human
<b>Source</b>	E.coli
<b>ProteinLength</b>	1-206 aa
<b>Description</b>	Enables biliverdin reductase [NAD(P)+] activity; peptidyl-cysteine S-nitrosylase activity; and riboflavin reductase (NADPH) activity. Involved in heme catabolic process; megakaryocyte differentiation; and negative regulation of insulin receptor signaling pathway. Located in cytosol; nucleoplasm; and plasma membrane. Is active in cytoplasm.
<b>Form</b>	50 mM Tris HCl, pH 8.0, with 150 mM sodium chloride, and 10% glycerol
<b>Molecular Mass</b>	22 kDa
<b>Purity</b>	≥90% estimated by SDS-PAGE
<b>Storage</b>	At -80 centigrade, ≥ 1 year
<b>Shipping</b>	Dry ice in continental US; may vary elsewhere

 Tel: 1-631-559-9269 1-516-512-3133

 Email: [info@creative-biomart.com](mailto:info@creative-biomart.com)  Fax: 1-631-938-8127

 45-1 Ramsey Road, Shirley, NY 11967, USA

**Unit Definition**

One unit is defined as the amount of enzyme required to produce 1 nmol of NADP per minute at 25 centigrade in 100 mM sodium phosphate, pH 5.0, with 200 µM of flavin mononucleotide.

## GENE INFORMATION

**Gene Name**

BLVRB biliverdin reductase B [ Homo sapiens (human) ]

**Official Symbol**

BLVRB

**Synonyms**

BLVRB; biliverdin reductase B; FLR; BVRB; SDR43U1; HEL-S-10; flavin reductase (NADPH); BVR-B; FR; GHBP; NADPH-dependent diaphorase; NADPH-flavin reductase; S-nitroso-CoA-assisted nitrosyltransferase; SNO-CoA-assisted nitrosyltransferase; biliverdin-IX beta-reductase; epididymis secretory protein Li 10; green heme-binding protein; short chain dehydrogenase/reductase family 43U, member 1; EC 1.5.1.30

**Gene ID**

645

**mRNA Refseq**

NM\_000713

**Protein Refseq**

NP\_000704

**MIM**

600941

**UniProt ID**

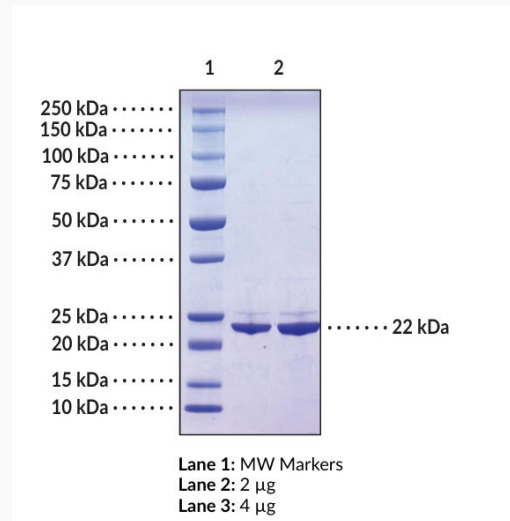
P30043

 Tel: 1-631-559-9269 1-516-512-3133

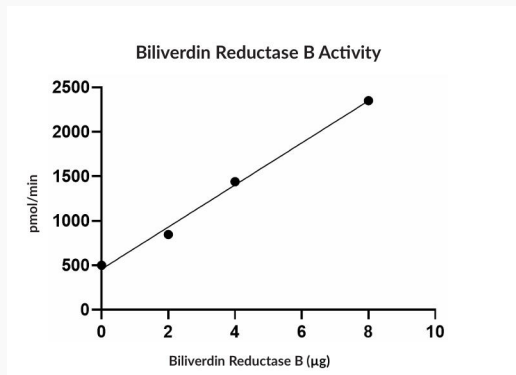
 Email: [info@creative-biomart.com](mailto:info@creative-biomart.com)  Fax: 1-631-938-8127

 45-1 Ramsey Road, Shirley, NY 11967, USA

**SDS-PAGE**



**Activity**



 Tel: 1-631-559-9269    1-516-512-3133

 Email: [info@creative-biomart.com](mailto:info@creative-biomart.com)     Fax: 1-631-938-8127

 45-1 Ramsey Road, Shirley, NY 11967, USA