

Recombinant Human BLVRB Protein, Myc/DDK-tagged, C13 and N15-labeled

Cat. No. BLVRB-1389H Lot. No. (See product label)

SPECIFICATION

Product Overview	BLVRB MS Standard C13 and N15-labeled recombinant protein (NP_000704) with a C-terminal MYC/DDK tag, was expressed in HEK293 cells.
Species	Human
Source	HEK293
Description	The final step in heme metabolism in mammals is catalyzed by the cytosolic biliverdin reductase enzymes A and B (EC 1.3.1.24).
Molecular Mass	22.1 kDa
AA Sequence	MAVKKIAIFGATGQTGLTTLAQAVQAGYEVTVLVRDSSRLPSEGPRPAHVVVGDVLQ AADVDKTVAGQDAVIVLLGTRNDLSPTTVMSEGARNIVAAMKAHGVDKVVACTSAFL LWDPTKVPRLQAVTDDHIRMHKVLRESGLKYVAVMPPHIGDQPLTGAYTVTLDGR GPSRVISKHDLGHFMLRCLTTDEYDGHSTYPSHQYQTRTRPLEQKLISEEDLAANDI LDYKDDDDKV
Purity	> 80% as determined by SDS-PAGE and Coomassie blue staining
Stability	Stable for 3 months from receipt of products under proper storage and handling conditions.
Storage	Store at -80 centigrade. Avoid repeated freeze-thaw cycles.

 Tel: 1-631-559-9269 1-516-512-3133

 Email: info@creative-biomart.com  Fax: 1-631-938-8127

 45-1 Ramsey Road, Shirley, NY 11967, USA

Concentration 50 µg/mL as determined by BCA

Storage Buffer 100 mM glycine, 25 mM Tris-HCl, pH 7.3.

GENE INFORMATION

Gene Name [BLVRB biliverdin reductase B \[Homo sapiens \(human\) \]](#)

Official Symbol [BLVRB](#)

Synonyms BLVRB; biliverdin reductase B (flavin reductase (NADPH)); Flavin reductase, FLR; flavin reductase (NADPH); SDR43U1; short chain dehydrogenase/reductase family 43U; member 1; FR; GHBP; BVR-B; NADPH-flavin reductase; NADPH-dependent diaphorase; green heme-binding protein; biliverdin-IX beta-reductase; short chain dehydrogenase/reductase family 43U, member 1; FLR; BVRB; MGC117413;

Gene ID [645](#)

mRNA Refseq [NM_000713](#)

Protein Refseq [NP_000704](#)

MIM [600941](#)

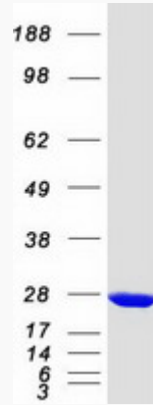
UniProt ID [P30043](#)

 Tel: 1-631-559-9269 1-516-512-3133

 Email: info@creative-biomart.com  Fax: 1-631-938-8127

 45-1 Ramsey Road, Shirley, NY 11967, USA

SDS-PAGE



 Tel: 1-631-559-9269 1-516-512-3133

 Email: info@creative-biomart.com  Fax: 1-631-938-8127

 45-1 Ramsey Road, Shirley, NY 11967, USA