

Recombinant Human BLVRB protein, His-tagged

Cat. No. BLVRB-9654H Lot. No. (See product label)

SPECIFICATION

Product Overview	Recombinant Human BLVRB protein(P30043)(221aa), fused with N-terminal His tag, was expressed in E. coli.
Species	Human
Source	E.coli
Protein Length	221aa(including fusion tag)
Tag	N-His
Form	20mM Tris.Cl, 50mM NaCl, 50% Glycerol, pH8.0.
Molecular Mass	24kDa(including fusion tag)
Storage	Store at -80°C and avoid repeated freeze-thaw cycles.
Reconstitution	It is recommended that sterile water be added to the vial to prepare a stock solution of 0.2 ug/ul. Centrifuge the vial at 4°C before opening to recover the entire contents.

GENE INFORMATION

Gene Name	BLVRB biliverdin reductase B (flavin reductase (NADPH)) [Homo sapiens]
Official Symbol	BLVRB

 Tel: 1-631-559-9269 1-516-512-3133

 Email: info@creative-biomart.com  Fax: 1-631-938-8127

 45-1 Ramsey Road, Shirley, NY 11967, USA

Synonyms BLVRB; biliverdin reductase B (flavin reductase (NADPH)); Flavin reductase , FLR; flavin reductase (NADPH); SDR43U1; short chain dehydrogenase/reductase family 43U; member 1; FR; GHBP; BVR-B; NADPH-flavin reductase; NADPH-dependent diaphorase; green heme-binding protein; biliverdin-IX beta-reductase; short chain dehydrogenase/reductase family 43U, member 1; FLR; BVRB; MGC117413;

Gene ID 645

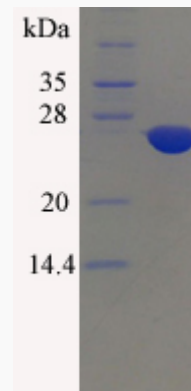
mRNA Refseq NM_000713

Protein Refseq NP_000704

MIM 600941

UniProt ID P30043

SDS-PAGE



 Tel: 1-631-559-9269 1-516-512-3133

 Email: info@creative-biomart.com  Fax: 1-631-938-8127

 45-1 Ramsey Road, Shirley, NY 11967, USA