

Recombinant Human BMI1 Protein(1-250aa), GST-tagged

Cat. No. BMI1-495H Lot. No. (See product label)

SPECIFICATION

Product Overview	Recombinant Human BMI1 Protein(1-250aa)(P35226), fused with N-terminal GST tag, was expressed in E. coli.
Species	Human
Source	E.coli
ProteinLength	1-250aa
Form	If the delivery form is liquid, the default storage buffer is Tris/PBS-based buffer, 5%-50% glycerol. If the delivery form is lyophilized powder, the buffer before lyophilization is Tris/PBS-based buffer, 6% Trehalose, pH 8.0.
Molecular Mass	56.4kDa
AA Sequence	MHRTRTRIKITELNPHLMCVLCGGYFIDATTIIECLHSFCKTCIVRYLETSKYCPICDVQV HKTRPLLNIKSDKTLQDIVYKLVPLGFKNEMKRRRDFYAAHPSADAANGSNEDRGEV ADEDKRIITDDEIISLSIEFFDQNRDLDRKVNKDKEKSKEEVNDKRYLRCPAAMTVMHL RKFLRSKMDIPNTFQIDVMYEEEEPLKDYYTLMDIAYIYTWRNRGPLPLKYRVRPTCKR MKISHQRDGLTNAGELE
Purity	Greater than 90% as determined by SDS-PAGE.
Storage	Store at -20°C/-80°C upon receipt, aliquoting is necessary for mutiple use. Avoid repeated freeze-thaw cycles.

 Tel: 1-631-559-9269 1-516-512-3133

 Email: info@creative-biomart.com  Fax: 1-631-938-8127

 45-1 Ramsey Road, Shirley, NY 11967, USA

Reconstitution It is recommended that sterile water be added to the vial to prepare a stock solution of 0.2 ug/ul. Centrifuge the vial at 4°C before opening to recover the entire contents.

GENE INFORMATION

Gene Name BMI1 BMI1 polycomb ring finger oncogene [Homo sapiens]

Official Symbol BMI1

Synonyms

BMI1; BMI1 polycomb ring finger oncogene; B lymphoma Mo MLV insertion region 1 homolog (mouse) , PCGF4, polycomb group ring finger 4; polycomb complex protein BMI-1; RNF51; flvi-2/bmi-1; ring finger protein 51; polycomb group protein Bmi1; polycomb group RING finger protein 4; B lymphoma Mo-MLV insertion region 1 homolog; murine leukemia viral (bmi-1) oncogene homolog; PCGF4; FLVI2/BMI1; MGC12685;

Gene ID 648

mRNA Refseq NM_005180

Protein Refseq NP_005171

MIM 164831

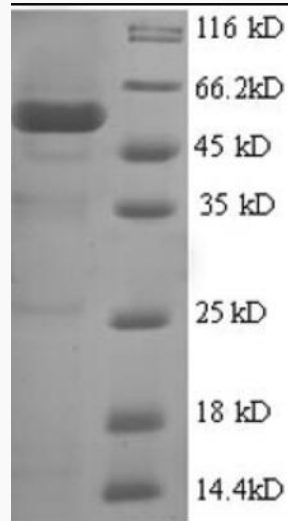
UniProt ID P35226

 Tel: 1-631-559-9269 1-516-512-3133

 Email: info@creative-biomart.com  Fax: 1-631-938-8127

 45-1 Ramsey Road, Shirley, NY 11967, USA

SDS-PAGE



 Tel: 1-631-559-9269 1-516-512-3133

 Email: info@creative-biomart.com  Fax: 1-631-938-8127

 45-1 Ramsey Road, Shirley, NY 11967, USA