

Recombinant Human BMI1 Protein, His tagged

Cat. No. BMI1-771H Lot. No. (See product label)

SPECIFICATION

Product Overview	Recombinant Human BMI1 Protein with His tag was expressed in E. coli.
Species	Human
Source	E.coli
Description	<p>This gene encodes a ring finger protein that is major component of the polycomb group complex 1 (PRC1). This complex functions through chromatin remodeling as an essential epigenetic repressor of multiple regulatory genes involved in embryonic development and self-renewal in somatic stem cells. This protein also plays a central role in DNA damage repair. This gene is an oncogene and aberrant expression is associated with numerous cancers and is associated with resistance to certain chemotherapies. A pseudogene of this gene is found on chromosome X. Read-through transcription also exists between this gene and the upstream COMM domain containing 3 (COMMD3) gene.</p>
Molecular Mass	The protein has a calculated MW of 39 kDa.
AA Sequence	<p>MGSSHHHHHHSSGLVPRGSHMHRTRRIKITELNPHLMCVLCGGYFIDATTIIECLHSF CKTCIVRYLETSKYCPICDVQVHKTRPLLNIKSDKTLQDIVYKLVPLGFKNEMKRRRD FYAAHPSADAANGSNEDRGEVADEDKRIITDDEIISLSIEFFDQNRRLDRKVNKDKEKS KEEVNDKRYLRCPAAMTVMHLRKFLRSKMDIPNTFQIDVMYEEEPKDYITLMDIAYI YTWRRNGPLPLKYRVRPTCKRMKISHQRDGLTNAGELESDSGSDKANSPPAGGIPST SSCLPSPSTPVQSPHPQFPHISSTMNGTSNSPSGNHQSSFANRPRKSSVNGSSATS</p>

 Tel: 1-631-559-9269 1-516-512-3133

 Email: info@creative-biomart.com  Fax: 1-631-938-8127

 45-1 Ramsey Road, Shirley, NY 11967, USA

	SG
Endotoxin	< 1 EU/μg by LAL
Purity	> 90% by SDS-PAGE
Storage	Store it under sterile conditions at -20 to -80 centigrade. It is recommended that the protein be aliquoted for optimal storage. Avoid repeated freeze-thaw cycles.
Concentration	0.15 mg/mL by BCA
Storage Buffer	Sterile PBS, pH 7.4

GENE INFORMATION

Gene Name	BMI1 BMI1 polycomb ring finger oncogene [Homo sapiens]
Official Symbol	BMI1
Synonyms	BMI1; BMI1 polycomb ring finger oncogene; B lymphoma Mo MLV insertion region 1 homolog (mouse), PCGF4, polycomb group ring finger 4; polycomb complex protein BMI-1; RNF51; flvi-2/bmi-1; ring finger protein 51; polycomb group protein Bmi1; polycomb group RING finger protein 4; B lymphoma Mo-MLV insertion region 1 homolog; murine leukemia viral (bmi-1) oncogene homolog; PCGF4; FLVI2/BMI1; MGC12685;
Gene ID	648
mRNA Refseq	NM_005180
Protein Refseq	NP_005171

 Tel: 1-631-559-9269 1-516-512-3133

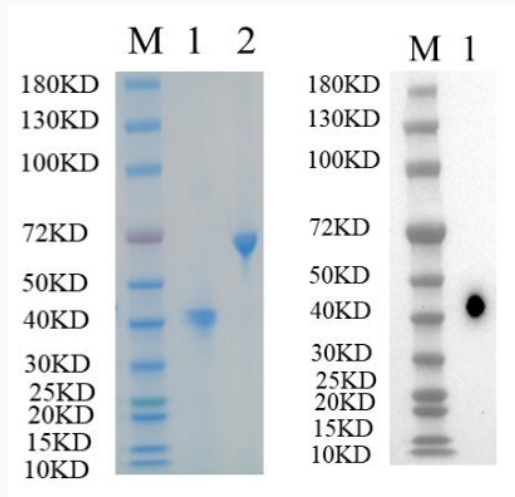
 Email: info@creative-biomart.com  Fax: 1-631-938-8127

 45-1 Ramsey Road, Shirley, NY 11967, USA

MIM 164831

UniProt ID P35226

Reducing 12% SDS-PAGE (CBB stained) and WB (Anti-His Mouse Monoclonal Antibody) analysis profile of purified BMI1.



1. BMI1-771H
2. BSA

 Tel: 1-631-559-9269 1-516-512-3133

 Email: info@creative-biomart.com  Fax: 1-631-938-8127

 45-1 Ramsey Road, Shirley, NY 11967, USA