

Recombinant Active Human BMP10 Protein, His-tagged(C-ter)

Cat. No. BMP10-09H Lot. No. (See product label)

SPECIFICATION

Product Overview	Recombinant Active Human BMP10 Protein with His tag (C-ter) was expressed in E. coli.
Species	Human
Source	E.coli
Description	The protein encoded by this gene is a member of the TGF-beta family of growth factors. Data suggest that the similar protein in mouse plays an important role in trabeculation of the embryonic heart. In human, this protein may signal through receptor serine/threonine kinases. [provided by RefSeq, Jul 2008]
Form	Powder
Bio-activity	Determined by its ability to induce alkaline phosphatase production by ATDC5 cells. The ED50 for this effect is 1.7-2.1 ng/mL.
AA Sequence	MNAKGN YCKRTPLYIDFKEIGWDSWIIAPPGYEAYE CRGVCNYPLAEHLTP TKHAI IQ ALVHLKNSQKASKACCVPTKLEPISILYLDKGVV TYKFKYEGMAVSECGCR
Endotoxin	Endotoxin level is less than 0.1 EU/μg of the protein, as determined by the LAL test.
Purity	> 98% (by SDS-PAGE)
Applications	SDS-PAGE

 Tel: 1-631-559-9269 1-516-512-3133

 Email: info@creative-biomart.com  Fax: 1-631-938-8127

 45-1 Ramsey Road, Shirley, NY 11967, USA

Notes	For laboratory research only, not for drug, diagnostic or other use.
Storage	Lyophilized protein should be stored at -20°C. After reconstitution, aliquot and store at -20°C or -80°C for up to one month. Storage in frost free freezers is not recommended. Avoid repeated freeze/thaw cycles. Suggest spin the vial prior to opening.
Storage Buffer	20 mM Sodium citrate (pH 3.5) and 0.2 M NaCl.
Reconstitution	It is recommended to reconstitute the lyophilized protein in sterile water to a concentration not less than 100 µg/mL and incubate the stock solution for at least 20 min at room temperature to make sure the protein is dissolved completely.

GENE INFORMATION

Gene Name	BMP10 bone morphogenetic protein 10 [Homo sapiens]
Official Symbol	BMP10
Synonyms	BMP10; bone morphogenetic protein 10; MGC126783;
Gene ID	27302
mRNA Refseq	NM_014482
Protein Refseq	NP_055297
MIM	608748
UniProt ID	O95393

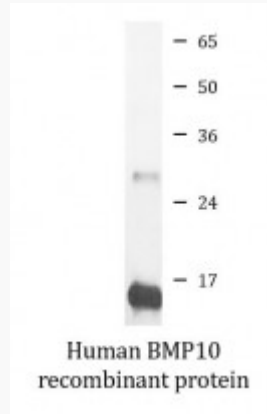
 Tel: 1-631-559-9269 1-516-512-3133

 Email: info@creative-biomart.com  Fax: 1-631-938-8127

 45-1 Ramsey Road, Shirley, NY 11967, USA



SDS-PAGE



Tel: 1-631-559-9269 1-516-512-3133

Email: info@creative-biomart.com Fax: 1-631-938-8127

45-1 Ramsey Road, Shirley, NY 11967, USA