

## Active Recombinant Human BMP15 Protein (Gln268-Arg392), C-His tagged, Animal-free, Carrier-free

Cat. No. BMP15-313H Lot. No. (See product label)

### SPECIFICATION

<b>Product Overview</b>	Recombinant Human BMP15 Protein (Gln268-Arg392) with C-His tag was expressed in E. coli and Animal-free as well as Carrier-free.
<b>Species</b>	Human
<b>Source</b>	E.coli
<b>ProteinLength</b>	Gln268-Arg392
<b>Description</b>	Bone Morphogenetic Protein-15 (BMP-15) is an extracellular multifunctional signaling cytokine that is also a member of the TGFβ family. In the ovarian follicles, BMP-15 has a vital role in regulating the growth and maturation of follicles, the sensitivity of granulosa cells to FSH, and preventing granulosa cells from apoptosis. In addition, BMP-15 and GDF9 cooperate and have the same interaction on target cells.
<b>Form</b>	Lyophilized
<b>Bio-activity</b>	Measure by its ability to induce alkaline phosphatase production by ATDC5 cells. The ED50 for this effect is < 17 ng/mL.
<b>Molecular Mass</b>	The protein has a calculated MW of 14.88 kDa. The protein migrates as 18 kDa under reducing condition (SDS-PAGE analysis).
<b>Endotoxin</b>	< 0.1 EU/μg of the protein by the LAL method.

 Tel: 1-631-559-9269 1-516-512-3133

 Email: [info@creative-biomart.com](mailto:info@creative-biomart.com)  Fax: 1-631-938-8127

 45-1 Ramsey Road, Shirley, NY 11967, USA

<b>Purity</b>	>98% as determined by SDS-PAGE analysis.
<b>Storage</b>	This product is stable after storage at: -20 centigrade for 12 months in lyophilized state from date of receipt. -20 or -80 centigrade for 1 month under sterile conditions after reconstitution. Avoid repeated freeze/thaw cycles.
<b>Storage Buffer</b>	Lyophilized from a 0.2 µm filtered solution containing 20 mM sodium citrate and 0.2 M NaCl, pH 3.5.
<b>Reconstitution</b>	It is recommended to reconstitute the lyophilized protein in 4 mM HCl to a concentration not less than 200 µg/mL and incubate the stock solution for at least 20 min to ensure sufficient re-dissolved.
<b>Shipping</b>	The product is shipped with polar packs. Upon receipt, store it immediately at -20 centigrade or lower for long term storage.

## GENE INFORMATION

<b>Gene Name</b>	<a href="#">BMP15 bone morphogenetic protein 15 [ Homo sapiens (human) ]</a>
<b>Official Symbol</b>	<a href="#">BMP15</a>
<b>Synonyms</b>	BMP15; bone morphogenetic protein 15; GDF9B; BMP-15; GDF-9B; growth/differentiation factor 9B; ODG2; POF4;
<b>Gene ID</b>	<a href="#">9210</a>
<b>mRNA Refseq</b>	<a href="#">NM_005448</a>
<b>Protein Refseq</b>	<a href="#">NP_005439</a>

 Tel: 1-631-559-9269 1-516-512-3133

 Email: [info@creative-biomart.com](mailto:info@creative-biomart.com)  Fax: 1-631-938-8127

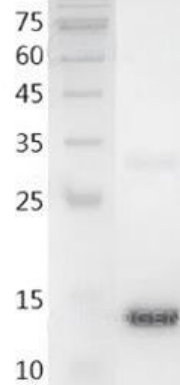
 45-1 Ramsey Road, Shirley, NY 11967, USA

**MIM** 300247

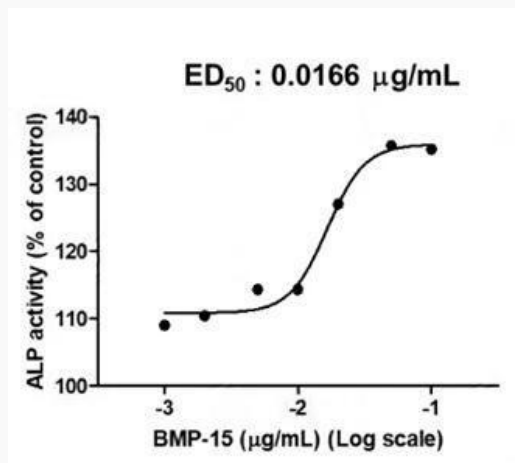
**UniProt ID** O95972

**SDS-PAGE analysis  
of recombinant  
human BMP-15.**

kDa M



**Activity**



Human BMP-15, His Tag, E. coli (LDG113PHE) induced alkaline phosphatase production by ATDC5 cells, with the ED<sub>50</sub> at 16.6 ng/mL.

Tel: 1-631-559-9269 1-516-512-3133

Email: [info@creative-biomart.com](mailto:info@creative-biomart.com) Fax: 1-631-938-8127

45-1 Ramsey Road, Shirley, NY 11967, USA