

Recombinant Sheep BMP15 protein, His&Myc-tagged

Cat. No. BMP15-6433S Lot. No. (See product label)

SPECIFICATION

Product Overview	Recombinant Sheep BMP15 protein(Q9MZE2)(269-393aa), fused with N-terminal His tag and C-terminal Myc tag, was expressed in E.coli.
Species	Sheep
Source	E.coli
ProteinLength	269-393a.a.
Tag	His&Myc
Form	If the delivery form is liquid, the default storage buffer is Tris/PBS-based buffer, 5%-50% glycerol. If the delivery form is lyophilized powder, the buffer before lyophilization is Tris/PBS-based buffer, 6% Trehalose, pH 8.0.
Molecular Mass	21.3 kDa
Purity	Greater than 90% as determined by SDS-PAGE.
Storage	Store at -20°C/-80°C upon receipt, aliquoting is necessary for mutiple use. Avoid repeated freeze-thaw cycles.
Reconstitution	We recommend that this vial be briefly centrifuged prior to opening to bring the contents to the bottom. Please reconstitute protein in deionized sterile water to a concentration of 0.1-1.0 mg/mL.We recommend to add 5-50% of glycerol (final

 Tel: 1-631-559-9269 1-516-512-3133

 Email: info@creative-biomart.com  Fax: 1-631-938-8127

 45-1 Ramsey Road, Shirley, NY 11967, USA

concentration) and aliquot for long-term storage at -20°C/-80°C.

AA Sequence

QAGSIASEVPGPSREHDGPESNQCSLHPFQVSFQQLGWDHWIAPHLYTPNYCKGV
CPRVLHYGLNSPNHAIQNLVSELVDQNVPQPSCVPYKYVPISILLIEANGSILYKEYE
GMIAQSCTCR

GENE INFORMATION**Gene Name**

BMP15 bone morphogenetic protein 15 [*Ovis aries*]

Official Symbol

BMP15

Synonyms

BMP15; bone morphogenetic protein 15; growth/differentiation factor 9B; GDF9B;
BMP-15; GDF-9B;

Gene ID

100141303

mRNA Refseq

NM_001114767

Protein Refseq

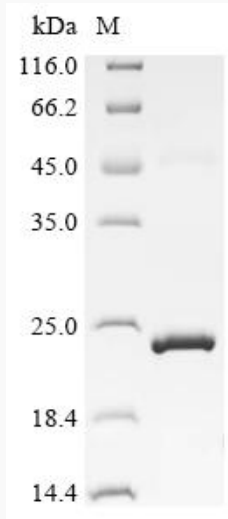
NP_001108239

 Tel: 1-631-559-9269 1-516-512-3133

 Email: info@creative-biomart.com  Fax: 1-631-938-8127

 45-1 Ramsey Road, Shirley, NY 11967, USA

SDS-PAGE



 Tel: 1-631-559-9269 1-516-512-3133

 Email: info@creative-biomart.com  Fax: 1-631-938-8127

 45-1 Ramsey Road, Shirley, NY 11967, USA