

## Recombinant Active Human BMP2 Protein, His-tagged(C-ter)

Cat. No. BMP2-11H Lot. No. (See product label)

### SPECIFICATION

<b>Product Overview</b>	Recombinant Active Human BMP2 Protein with His tag (C-ter) was expressed in E. coli.
<b>Species</b>	Human
<b>Source</b>	E.coli
<b>Description</b>	The protein encoded by this gene belongs to the transforming growth factor-beta (TGFB) superfamily. The encoded protein acts as a disulfide-linked homodimer and induces bone and cartilage formation. [provided by RefSeq, Jul 2008]
<b>Form</b>	Powder
<b>Bio-activity</b>	Determined by its ability to induce alkaline phosphatase production by ATDC5 cells. The ED50 for this effect is < 9.5 ng/mL. The specific activity of recombinant BMP-2 is > 3.2 x 10 <sup>6</sup> IU/mg.
<b>AA Sequence</b>	MQAKHKQRKRLKSSCKRHPLYVDFSDVGWNDWIVAPPGYHAFYCHGECPPFLADH LNSTNHAIVQTLNVNNSKIPKACCVPTELSAISMLYLDENEKVVLLKNYQDMVVEGCG CR
<b>Endotoxin</b>	Endotoxin level is less than 0.1 EU/μg of the protein, as determined by the LAL test.
<b>Purity</b>	> 95% (by SDS-PAGE)

 Tel: 1-631-559-9269 1-516-512-3133

 Email: [info@creative-biomart.com](mailto:info@creative-biomart.com)  Fax: 1-631-938-8127

 45-1 Ramsey Road, Shirley, NY 11967, USA

<b>Applications</b>	SDS-PAGE
<b>Notes</b>	For laboratory research only, not for drug, diagnostic or other use.
<b>Storage</b>	Lyophilized protein should be stored at -20°C. After reconstitution, aliquot and store at -20°C or -80°C for up to one month. Storage in frost free freezers is not recommended. Avoid repeated freeze/thaw cycles. Suggest spin the vial prior to opening.
<b>Storage Buffer</b>	20 mM Sodium citrate (pH 3.5) and 0.2 M NaCl.
<b>Reconstitution</b>	It is recommended to reconstitute the lyophilized protein in sterile water to a concentration not less than 100 µg/mL and incubate the stock solution for at least 20 min at room temperature to make sure the protein is dissolved completely.

## GENE INFORMATION

<b>Gene Name</b>	BMP2 bone morphogenetic protein 2 [ Homo sapiens ]
<b>Official Symbol</b>	BMP2
<b>Synonyms</b>	BMP2; bone morphogenetic protein 2; BMP2A; BMP-2A; bone morphogenetic protein 2A; BDA2;
<b>Gene ID</b>	650
<b>mRNA Refseq</b>	NM_001200
<b>Protein Refseq</b>	NP_001191
<b>MIM</b>	112261

 Tel: 1-631-559-9269 1-516-512-3133

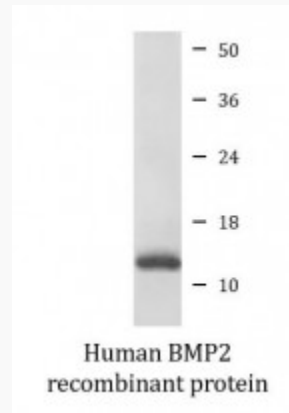
 Email: [info@creative-biomart.com](mailto:info@creative-biomart.com)  Fax: 1-631-938-8127

 45-1 Ramsey Road, Shirley, NY 11967, USA

UniProt ID

P12643

SDS-PAGE



 Tel: 1-631-559-9269 1-516-512-3133

 Email: [info@creative-biomart.com](mailto:info@creative-biomart.com)  Fax: 1-631-938-8127

 45-1 Ramsey Road, Shirley, NY 11967, USA