

Recombinant Human BMP2 Protein

Cat. No. BMP2-136H Lot. No. (See product label)

SPECIFICATION

Product Overview	Recombinant Human/Mouse/Rat Bone Morphogenetic Protein 2 is produced by our E.coli expression system and the target gene encoding Gln283-Arg396 is expressed.
Species	Human
Source	E.coli
ProteinLength	283-396 a.a.
Description	Bone Morphogenetic Protein-2 (BMP-2) is one of the bone-growth regulatory factors that belong to the transforming growth factor-beta (TGF-beta) superfamily of proteins. BMPs are synthesized as large precursor molecules, which are cleaved by proteolytic enzymes. The active form of BMP-2 can consist of a dimer of two identical proteins or a heterodimer of two related bone morphogenetic proteins.
Form	Lyophilized from a 0.2 um filtered solution of 50mM HAc .
AA Sequence	Gln283-Arg396
Endotoxin	Less than 0.1 ng/ug (1 EU/ug).
Purity	>95%
Storage	Lyophilized protein should be stored at < -20 centigrade, though stable at room temperature for 3 weeks.

 Tel: 1-631-559-9269 1-516-512-3133

 Email: info@creative-biomart.com  Fax: 1-631-938-8127

 45-1 Ramsey Road, Shirley, NY 11967, USA

Reconstituted protein solution can be stored at 4-7 centigrade for 2-7 days.
 Aliquots of reconstituted samples are stable at < -20 centigrade for 3 months.

Reconstitution

Always centrifuge tubes before opening. Do not mix by vortex or pipetting.
 It is not recommended to reconstitute to a concentration less than 100µg/ml.
 Dissolve the lyophilized protein in distilled water.
 Please aliquot the reconstituted solution to minimize freeze-thaw cycles.

Quality Statement

Purity: Greater than 95% as determined by reducing SDS-PAGE.

Shipping

The product is shipped at ambient temperature.
 Upon receipt, store it immediately at the temperature listed below.

GENE INFORMATION

Gene Name

[BMP2 bone morphogenetic protein 2 \[Homo sapiens \(human\) \]](#)

Official Symbol

[BMP2](#)

Synonyms

Bone Morphogenetic Protein 2; BMP-2; Bone Morphogenetic Protein 2A; BDA2; BMP2A; SSFSC; SSFSC1

Gene ID

[650](#)

mRNA Refseq

[NM_001200.4](#)

Protein Refseq

[NP_001191.1](#)

MIM

[112261](#)

UniProt ID

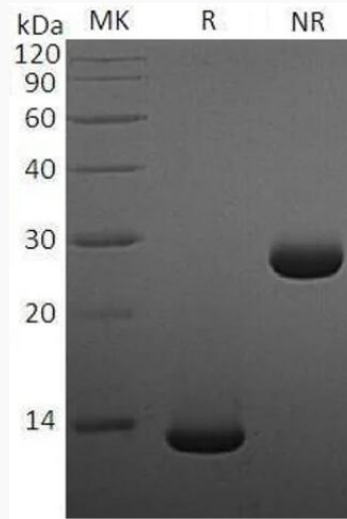
[P12643](#)

 Tel: 1-631-559-9269 1-516-512-3133

 Email: info@creative-biomart.com  Fax: 1-631-938-8127

 45-1 Ramsey Road, Shirley, NY 11967, USA

SDS-PAGE



 Tel: 1-631-559-9269 1-516-512-3133

 Email: info@creative-biomart.com  Fax: 1-631-938-8127

 45-1 Ramsey Road, Shirley, NY 11967, USA