

# Active Recombinant Human BMP2 Protein (Gln283-Arg396), C-His tagged, Animal-free, Carrier-free

Cat. No. BMP2-277H Lot. No. (See product label)

## SPECIFICATION

<b>Product Overview</b>	Recombinant Human BMP2 Protein (Gln283-Arg396) with C-His tag was expressed in E. coli and Animal-free as well as Carrier-free.
<b>Species</b>	Human
<b>Source</b>	E.coli
<b>ProteinLength</b>	Gln283-Arg396
<b>Description</b>	Bone Morphogenetic Protein-2 (BMP-2) is an extracellular multifunctional signaling cytokine that is also a member of the TGF- $\beta$ family. BMP-2 can bind with the TGF- $\beta$ receptor to active SMAD protein signal transduction. Moreover, it engages in the path of signals such as Wnt and Notch. BMP-2 plays an essential role in the growth of hard bones and cartilage and involved in the differentiation of osteoblasts.
<b>Form</b>	Lyophilized
<b>Bio-activity</b>	Measure by its ability to induce alkaline phosphatase production by ATDC5 cells. The ED50 for this effect is < 1.0 $\mu\text{g/mL}$ .
<b>Molecular Mass</b>	The protein has a calculated MW of 13.76 kDa. The protein migrates as 14 kDa under reducing condition (SDS-PAGE analysis).
<b>Endotoxin</b>	< 0.1 EU/ $\mu\text{g}$ of the protein by the LAL method.

 Tel: 1-631-559-9269 1-516-512-3133

 Email: [info@creative-biomart.com](mailto:info@creative-biomart.com)  Fax: 1-631-938-8127

 45-1 Ramsey Road, Shirley, NY 11967, USA

<b>Purity</b>	>95% as determined by SDS-PAGE analysis.
<b>Storage</b>	This product is stable after storage at: -20 centigrade for 12 months in lyophilized state from date of receipt. -20 or -80 centigrade for 1 month under sterile conditions after reconstitution. Avoid repeated freeze/thaw cycles.
<b>Storage Buffer</b>	Lyophilized from a 0.2 µm filtered solution containing 20 mM sodium citrate and 0.2 M NaCl, pH 3.5.
<b>Reconstitution</b>	It is recommended to reconstitute the lyophilized protein in 4 mM HCl to a concentration not less than 200 µg/mL and incubate the stock solution for at least 20 min to ensure sufficient re-dissolved.
<b>Shipping</b>	The product is shipped with polar packs. Upon receipt, store it immediately at -20 centigrade or lower for long term storage.

## GENE INFORMATION

<b>Gene Name</b>	<a href="#">BMP2 bone morphogenetic protein 2 [ Homo sapiens (human) ]</a>
<b>Official Symbol</b>	<a href="#">BMP2</a>
<b>Synonyms</b>	BMP2; bone morphogenetic protein 2; BMP2A; BMP-2A; bone morphogenetic protein 2A; BDA2;
<b>Gene ID</b>	<a href="#">650</a>
<b>mRNA Refseq</b>	<a href="#">NM_001200</a>
<b>Protein Refseq</b>	<a href="#">NP_001191</a>

 Tel: 1-631-559-9269 1-516-512-3133

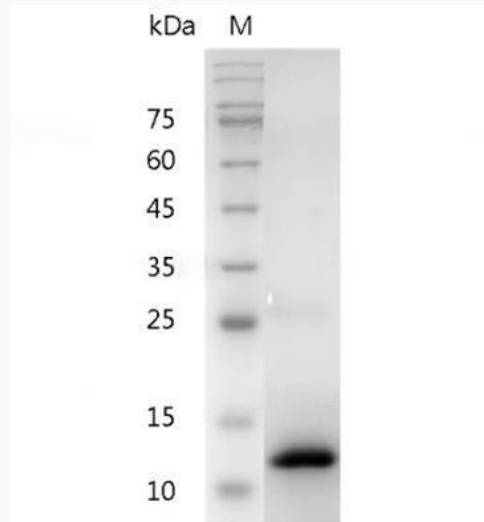
 Email: [info@creative-biomart.com](mailto:info@creative-biomart.com)  Fax: 1-631-938-8127

 45-1 Ramsey Road, Shirley, NY 11967, USA

MIM 112261

UniProt ID P12643

**SDS-PAGE analysis  
of recombinant  
human BMP-2.**



 Tel: 1-631-559-9269 1-516-512-3133

 Email: [info@creative-biomart.com](mailto:info@creative-biomart.com)  Fax: 1-631-938-8127

 45-1 Ramsey Road, Shirley, NY 11967, USA