

Recombinant Cattle BMP2 protein, His-tagged

Cat. No. BMP2-567C Lot. No. (See product label)

SPECIFICATION

Product Overview	Recombinant Cattle BMP2 (A5PJ19) aa. (Ser219~Lys392) fused with N-terminal His tag was produced in E. coli cells.
Species	Cattle
Source	E.coli
ProteinLength	Ser219~Lys392
Form	Freeze-dried powder
Molecular Mass	16&18&24kDa as determined by SDS-PAGE reducing conditions.
Endotoxin	<1.0EU per 1g (determined by the LAL method)
Purity	> 95%
Characteristic	The isoelectric point is 9.7.
Applications	SDS-PAGE; WB; ELISA; IP.
Stability	The thermal stability is described by the loss rate. The loss rate was determined by accelerated thermal degradation test, that is, incubate the protein at 37°C for 48h, and no obvious degradation and precipitation were observed. The loss rate is less

 Tel: 1-631-559-9269 1-516-512-3133

 Email: info@creative-biomart.com  Fax: 1-631-938-8127

 45-1 Ramsey Road, Shirley, NY 11967, USA

than 5% within the expiration date under appropriate storage condition.

Storage

Avoid repeated freeze/thaw cycles. Store at 2-8°C for one month. Aliquot and store at -80°C for 12 months.

Storage buffer

PBS, pH7.4, containing 5% sucrose, 0.01% sarcosyl.

Reconstitution

Reconstitute in sterile PBS, pH7.2-pH7.4

GENE INFORMATION**Gene Name**

[BMP2 bone morphogenetic protein 2 \[Bos taurus \(cattle\) \]](#)

Official Symbol

[BMP2](#)

Synonyms

BMP2; bone morphogenetic protein 2

Gene ID

[615037](#)

mRNA Refseq

[NM_001099141.1](#)

Protein Refseq

[NP_001092611.1](#)

UniProt ID

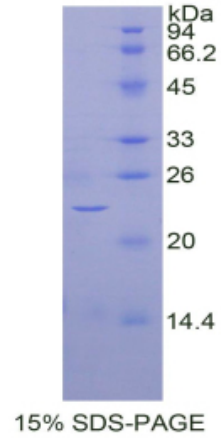
[A5PJI9](#)

 Tel: 1-631-559-9269 1-516-512-3133

 Email: info@creative-biomart.com  Fax: 1-631-938-8127

 45-1 Ramsey Road, Shirley, NY 11967, USA

SDS-PAGE



 Tel: 1-631-559-9269 1-516-512-3133

 Email: info@creative-biomart.com  Fax: 1-631-938-8127

 45-1 Ramsey Road, Shirley, NY 11967, USA