

Recombinant Active Human BMP3 Protein, His-tagged(C-ter)

Cat. No. BMP3-12H Lot. No. (See product label)

SPECIFICATION

Product Overview	Recombinant Active Human BMP3 Protein with His tag (C-ter) was expressed in E. coli.
Species	Human
Source	E.coli
Description	BMP3 belongs to the transforming growth factor-beta (TGFB) superfamily. Bone morphogenic protein, also known as osteogenin, induces bone formation. [provided by RefSeq, Jul 2008]
Form	Powder
Bio-activity	Determined by its ability to induce alkaline phosphatase production by ATDC5 cells. The ED50 for this effect is < 9.5 ng/mL.
AA Sequence	MQWIEPRNCARRYLKVDFADIGWSEWII SPKSFDAYYCSGACQFPMPKSLKPSNHA TIQSIVRAVGVVPGIPEPCCVPEKMSSLSILFFDENKNVVLKVYPNMTVESACR
Endotoxin	Endotoxin level is less than 0.1 EU/μg of the protein, as determined by the LAL test.
Purity	> 95% (by SDS-PAGE)
Applications	SDS-PAGE

 Tel: 1-631-559-9269 1-516-512-3133

 Email: info@creative-biomart.com  Fax: 1-631-938-8127

 45-1 Ramsey Road, Shirley, NY 11967, USA

Notes	For laboratory research only, not for drug, diagnostic or other use.
Storage	Lyophilized protein should be stored at -20°C. After reconstitution, aliquot and store at -20°C or -80°C for up to one month. Storage in frost free freezers is not recommended. Avoid repeated freeze/thaw cycles. Suggest spin the vial prior to opening.
Storage Buffer	20 mM Sodium citrate (pH 3.5) and 0.2 M NaCl.
Reconstitution	It is recommended to reconstitute the lyophilized protein in sterile water to a concentration not less than 100 µg/mL and incubate the stock solution for at least 20 min at room temperature to make sure the protein is dissolved completely.

GENE INFORMATION

Gene Name	BMP3 bone morphogenetic protein 3 [Homo sapiens]
Official Symbol	BMP3
Synonyms	BMP3; bone morphogenetic protein 3; bone morphogenetic protein 3 (osteogenic); osteogenin; BMP-3; bone morphogenetic protein-3; bone morphogenetic protein 3A; BMP-3A;
Gene ID	651
mRNA Refseq	NM_001201
Protein Refseq	NP_001192
MIM	112263

 Tel: 1-631-559-9269 1-516-512-3133

 Email: info@creative-biomart.com  Fax: 1-631-938-8127

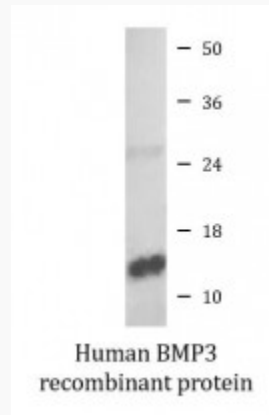
 45-1 Ramsey Road, Shirley, NY 11967, USA



UniProt ID

P12645

SDS-PAGE



Tel: 1-631-559-9269 1-516-512-3133

Email: info@creative-biomart.com Fax: 1-631-938-8127

45-1 Ramsey Road, Shirley, NY 11967, USA