

Recombinant Mouse BMP3 Protein (359-468 aa), His-tagged

Cat. No. BMP3-2588M Lot. No. (See product label)

SPECIFICATION

Product Overview	Recombinant Mouse BMP3 Protein (359-468 aa) is produced by E. coli expression system. This protein is fused with a 6xHis tag at the C-terminal. Research Area: Developmental Biology. Protein Description: Full Length of Mature Protein.
Species	Mouse
Source	E.coli
ProteinLength	359-468 aa
Description	Negatively regulates bone density. Antagonizes the ability of certain osteogenic BMPs to induce osteoprogenitor differentiation and ossification.
Form	Tris-based buffer,50% glycerol
Molecular Mass	14.4 kDa
AA Sequence	QWVEPRNCARRYLKVDFADIGWSEWIISPKSFDAFYCSGACQFPMPKSLKPSNHAT IQSIVRAVGVVSGIPEPCCVPEKMSSLSILFFDENKNVVLKVYPNMTVDSCACR
Purity	> 85% as determined by SDS-PAGE.
Notes	Repeated freezing and thawing is not recommended. Store working aliquots at 4 centigrade for up to one week.

 Tel: 1-631-559-9269 1-516-512-3133

 Email: info@creative-biomart.com  Fax: 1-631-938-8127

 45-1 Ramsey Road, Shirley, NY 11967, USA

Storage

The shelf life is related to many factors, storage state, buffer ingredients, storage temperature and the stability of the protein itself. Generally, the shelf life of liquid form is 6 months at -20 centigrade/-80 centigrade. The shelf life of lyophilized form is 12 months at -20 centigrade/-80 centigrade.

Concentration

A hardcopy of COA will be sent along with the products. Please refer to it for detailed information.

GENE INFORMATION**Gene Name**

Bmp3 bone morphogenetic protein 3 [Mus musculus]

Official Symbol

BMP3

Synonyms

BMP3; bone morphogenetic protein 3;

Gene ID

12158

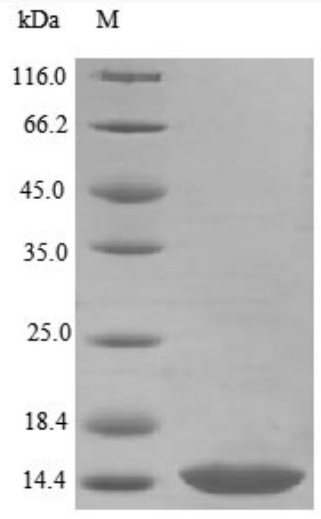
UniProt ID

Q8BHE5

 Tel: 1-631-559-9269 1-516-512-3133

 Email: info@creative-biomart.com  Fax: 1-631-938-8127

 45-1 Ramsey Road, Shirley, NY 11967, USA



(Tris-Glycine gel) Discontinuous SDS-PAGE (reduced) with 5% enrichment gel and 15% separation gel.

 Tel: 1-631-559-9269 1-516-512-3133

 Email: info@creative-biomart.com  Fax: 1-631-938-8127

 45-1 Ramsey Road, Shirley, NY 11967, USA