

Recombinant Human BMP3 Protein, GST-tagged

Cat. No. BMP3-264H Lot. No. (See product label)

SPECIFICATION

Product Overview	Human BMP3 full-length ORF (AAI17515.1, 1 a.a. - 472 a.a.) recombinant protein with GST-tag at N-terminal.
Species	Human
Source	Wheat Germ
Description	BMP3 belongs to the transforming growth factor-beta (TGFB) superfamily. Bone morphogenic protein, also known as osteogenin, induces bone formation.
Form	50 mM Tris-HCl, 10 mM reduced Glutathione, pH=8.0 in the elution buffer.
Molecular Mass	79.8 kDa
AA Sequence	<p>MAGASRLLFLWLGCFCVSLAQGERPKPPFPELRKAVPGDRTAGGGPDSELQPQDK VSEHMLRLYDRYSTVQAARTPGSLEGGSQPWRPRLREGNTVRSFRAAAAETLER KGLYIFNLTSLTKSENILSATLYFCIGELGNISLSCPVSGGCSHHAQRKHIQIDLSAWTL KFSRNQSQLLGHLSVDMAKSHRDIMSWLSKDITQFLRKAKENEEFLIGFNITSKGRQ LPKRRLPFPEPYILVYANDAAISEPESVSSLQGHRNFPTGTVPKWDSHIRAALSIER RKKRSTGVLLPLQNNELPGA EYQYKKDEVWEERKPYKTLQAQAPEKSKNKKKQRK GPHRKSQTLQFDEQTLKKARRKQWIEPRNCARRYLKVDFADIGWSEWIISPKSFDA YYCSGACQFPMPKSLKPSNHATIQSIVRAVGVVPGIPEPCCVPEKMSSLSILFFDENK NVVLKVYPNMTVESACR</p>
Notes	Best use within three months from the date of receipt of this protein.

 Tel: 1-631-559-9269 1-516-512-3133

 Email: info@creative-biomart.com  Fax: 1-631-938-8127

 45-1 Ramsey Road, Shirley, NY 11967, USA

Storage Store at -80 centigrade. Aliquot to avoid repeated freezing and thawing.

Storage Buffer 50 mM Tris-HCl, 10 mM reduced Glutathione, pH=8.0 in the elution buffer.

GENE INFORMATION

Gene Name [BMP3 bone morphogenetic protein 3 \[Homo sapiens \]](#)

Official Symbol [BMP3](#)

Synonyms BMP3; bone morphogenetic protein 3; bone morphogenetic protein 3 (osteogenic); osteogenin; BMP-3; bone morphogenetic protein-3; bone morphogenetic protein 3A; BMP-3A;

Gene ID [651](#)

mRNA Refseq [NM_001201](#)

Protein Refseq [NP_001192](#)

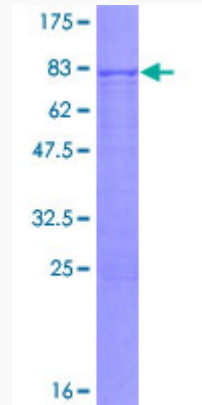
MIM [112263](#)

UniProt ID [P12645](#)

 Tel: 1-631-559-9269 1-516-512-3133

 Email: info@creative-biomart.com  Fax: 1-631-938-8127

 45-1 Ramsey Road, Shirley, NY 11967, USA



 Tel: 1-631-559-9269 1-516-512-3133

 Email: info@creative-biomart.com  Fax: 1-631-938-8127

 45-1 Ramsey Road, Shirley, NY 11967, USA