

Active Recombinant Bovine BMP4 protein, His-tagged

Cat. No. BMP4-1132B Lot. No. (See product label)

SPECIFICATION

Product Overview	Active Recombinant Bovine BMP4 protein(Q2KJH1)(219~392 aa), fused with N-terminal His tag, was expressed in E.coli.
Species	Bovine
Source	E.coli
ProteinLength	219-392 aa
Form	Lyophilized from sterile PBS, pH7.4, containing 0.01% SKL, 1mM DTT, 5% Trehalose and Proclin300.
Bio-activity	BMP4 (Bone morphogenetic protein 4) is a member of the bone morphogenetic protein family, which is involved in bone and cartilage development, specifically tooth and limb development and fracture repair. To test the effect of BMP4 on cell apoptosis, HepG2 cells were seeded into triplicate wells of 96-well plates at a density of 4,000 cells/well and allowed to attach overnight, then the medium was replaced with various concentrations of recombinant bovine BMP4 diluted with 5% serum standard DMEM. After incubated for 72h, cells were observed by inverted microscope and cell proliferation was measured by Cell Counting Kit-8 (CCK-8). Briefly, 10 µof CCK-8 solution was added to each well of the plate, then the absorbance at 450 nm was measured using a microplate reader after incubating the plate for 1-4 hours at 37°C. Apoptosis of HepG2 cells after incubation with BMP4 for 72h observed by inverted microscope was shown. Cell viability was assessed by CCK-8 (Cell Counting

 Tel: 1-631-559-9269 1-516-512-3133

 Email: info@creative-biomart.com  Fax: 1-631-938-8127

 45-1 Ramsey Road, Shirley, NY 11967, USA

Kit-8) assay after incubation with recombinant bovine BMP4 for 72h. BMP4 significantly decreased cell viability of HepG2 cells. The ED50 of recombinant bovine BMP4 is 3.07 ug/ml.

Molecular Mass 21.1kDa

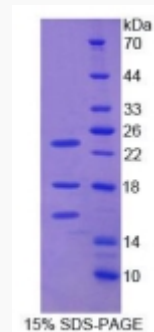
Endotoxin <1.0EU per 1µg (determined by the LAL method).

Purity > 90% as determined by SDS-PAGE.

Storage Avoid repeated freeze/thaw cycles. Store at -20°C for 12 months. Aliquot and store at -80°C for 12 months.

Reconstitution Reconstitute in 10mM PBS (pH7.4) to a concentration of 0.1-1.0 mg/mL. Do not vortex.

SDS-PAGE

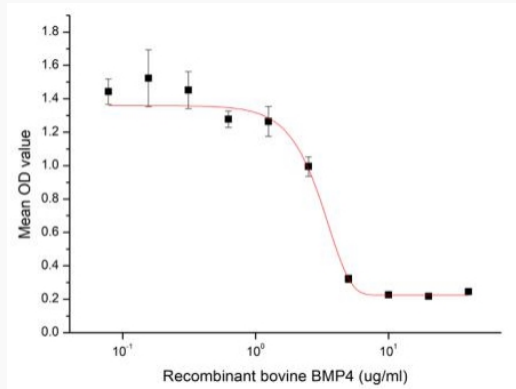


Tel: 1-631-559-9269 1-516-512-3133

Email: info@creative-biomart.com Fax: 1-631-938-8127

45-1 Ramsey Road, Shirley, NY 11967, USA

Activity



 Tel: 1-631-559-9269 1-516-512-3133

 Email: info@creative-biomart.com  Fax: 1-631-938-8127

 45-1 Ramsey Road, Shirley, NY 11967, USA