

Recombinant Active Human BMP4 Protein, His-tagged(C-ter)

Cat. No. BMP4-13H Lot. No. (See product label)

SPECIFICATION

Product Overview	Recombinant Active Human BMP4 Protein with His tag (C-ter) was expressed in E. coli.
Species	Human
Source	E.coli
Description	<p>The protein encoded by this gene is a member of the bone morphogenetic protein family which is part of the transforming growth factor-beta superfamily. The superfamily includes large families of growth and differentiation factors. Bone morphogenetic proteins were originally identified by an ability of demineralized bone extract to induce endochondral osteogenesis in vivo in an extraskeletal site. This particular family member plays an important role in the onset of endochondral bone formation in humans, and a reduction in expression has been associated with a variety of bone diseases, including the heritable disorder Fibrodysplasia Ossificans Progressiva. Alternative splicing in the 5' untranslated region of this gene has been described and three variants are described, all encoding an identical protein. [provided by RefSeq, Jul 2008]</p>
Form	Powder
Bio-activity	Determined by its ability to induce alkaline phosphatase production by ATDC5 cells. The ED50 for this effect is < 0.58 ng/mL.
AA Sequence	MKKNKNCRRHSLYVDFSDVGWNDWIVAPPGYQAFYCHGDCPFPLADHLNSTNHAI

 Tel: 1-631-559-9269 1-516-512-3133

 Email: info@creative-biomart.com  Fax: 1-631-938-8127

 45-1 Ramsey Road, Shirley, NY 11967, USA

VQTLVNSVNSSIPKACCVPTELSAISMLYLDEYDKVVLKKNYQEMVVEGCGCR

Endotoxin Endotoxin level is less than 0.1 EU/μg of the protein, as determined by the LAL test.

Purity > 95% (by SDS-PAGE)

Applications SDS-PAGE

Notes For laboratory research only, not for drug, diagnostic or other use.

Storage Lyophilized protein should be stored at -20°C. After reconstitution, aliquot and store at -20°C or -80°C for up to one month. Storage in frost free freezers is not recommended. Avoid repeated freeze/thaw cycles. Suggest spin the vial prior to opening.

Storage Buffer 20 mM Sodium carbonate (pH 9.0)

Reconstitution It is recommended to reconstitute the lyophilized protein in sterile water to a concentration not less than 100 μg/mL and incubate the stock solution for at least 20 min at room temperature to make sure the protein is dissolved completely.

GENE INFORMATION

Gene Name [BMP4 bone morphogenetic protein 4 \[Homo sapiens \]](#)

Official Symbol [BMP4](#)

Synonyms BMP4; bone morphogenetic protein 4; BMP2B; BMP-4; BMP-2B; bone morphogenetic protein 2B; ZYME; OFC11; BMP2B1; MCOPS6;

Gene ID [652](#)

 Tel: 1-631-559-9269 1-516-512-3133

 Email: info@creative-biomart.com  Fax: 1-631-938-8127

 45-1 Ramsey Road, Shirley, NY 11967, USA

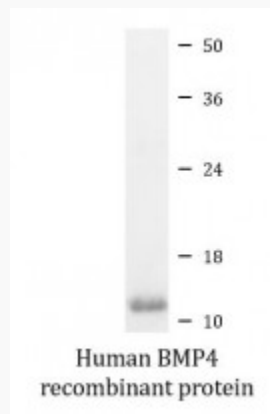
mRNA Refseq [NM_001202](#)

Protein Refseq [NP_001193](#)

MIM [112262](#)

UniProt ID [P12644](#)

SDS-PAGE



 Tel: 1-631-559-9269 1-516-512-3133

 Email: info@creative-biomart.com  Fax: 1-631-938-8127

 45-1 Ramsey Road, Shirley, NY 11967, USA