

## Recombinant Human BMP5 Protein, GST-tagged

Cat. No. BMP5-270H Lot. No. (See product label)

### SPECIFICATION

<b>Product Overview</b>	Human BMP5 partial ORF ( AAH27958.1, 323 a.a. - 422 a.a.) recombinant protein with GST-tag at N-terminal.
<b>Species</b>	Human
<b>Source</b>	Wheat Germ
<b>Description</b>	<p>This gene encodes a member of the bone morphogenetic protein family which is part of the transforming growth factor-beta superfamily. The superfamily includes large families of growth and differentiation factors. Bone morphogenetic proteins were originally identified by an ability of demineralized bone extract to induce endochondral osteogenesis in vivo in an extraskeletal site. These proteins are synthesized as prepropeptides, cleaved, and then processed into dimeric proteins. This protein may act as an important signaling molecule within the trabecular meshwork and optic nerve head, and may play a potential role in glaucoma pathogenesis. This gene is differentially regulated during the formation of various tumors.</p>
<b>Form</b>	50 mM Tris-HCl, 10 mM reduced Glutathione, pH=8.0 in the elution buffer.
<b>Molecular Mass</b>	36.63 kDa
<b>AA Sequence</b>	NQNRNKSSSHQDSSRMSSVGDYNTSEQKQACKKHELYVSFRDLGWQDWIIAPEGY AAFYCDGECFPLNAHMNATNHAIVQTLVHLMFPDHVPKPCAPT
<b>Notes</b>	Best use within three months from the date of receipt of this protein.

 Tel: 1-631-559-9269 1-516-512-3133

 Email: [info@creative-biomart.com](mailto:info@creative-biomart.com)  Fax: 1-631-938-8127

 45-1 Ramsey Road, Shirley, NY 11967, USA

**Storage** Store at -80 centigrade. Aliquot to avoid repeated freezing and thawing.

**Storage Buffer** 50 mM Tris-HCl, 10 mM reduced Glutathione, pH=8.0 in the elution buffer.

## GENE INFORMATION

**Gene Name** BMP5 bone morphogenetic protein 5 [ Homo sapiens ]

**Official Symbol** BMP5

**Synonyms** BMP5; bone morphogenetic protein 5; BMP-5; MGC34244;

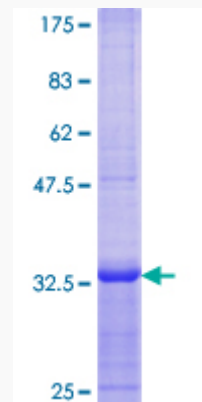
**Gene ID** 653

**mRNA Refseq** NM\_021073

**Protein Refseq** NP\_066551

**MIM** 112265

**UniProt ID** P22003



 Tel: 1-631-559-9269 1-516-512-3133

 Email: [info@creative-biomart.com](mailto:info@creative-biomart.com)  Fax: 1-631-938-8127

 45-1 Ramsey Road, Shirley, NY 11967, USA