

Recombinant Human BMP5 Protein, GST-tagged

Cat. No. BMP5-271H Lot. No. (See product label)

SPECIFICATION

Product Overview Human BMP5 partial ORF (NP_066551.1, 323 a.a. - 454 a.a.) recombinant protein with GST-tag at N-terminal.

Species Human

Source Wheat Germ

Description This gene encodes a member of the bone morphogenetic protein family which is part of the transforming growth factor-beta superfamily. The superfamily includes large families of growth and differentiation factors. Bone morphogenetic proteins were originally identified by an ability of demineralized bone extract to induce endochondral osteogenesis in vivo in an extraskeletal site. These proteins are synthesized as prepropeptides, cleaved, and then processed into dimeric proteins. This protein may act as an important signaling molecule within the trabecular meshwork and optic nerve head, and may play a potential role in glaucoma pathogenesis. This gene is differentially regulated during the formation of various tumors.

Form 50 mM Tris-HCl, 10 mM reduced Glutathione, pH=8.0 in the elution buffer.

Molecular Mass 40.15 kDa

AA Sequence NQNRNKSSSHQDSSRMSSVGDYNTSEQKQACKKHELYVSFRDLGWQDWIIAPEGY
AAFYCDGECDFPLNAHMNATNHAIVQTLVHLMFPDHVPKPCCAPTKLNAISVLYFDD
SSNVILKKYRNMVVRSCGCH

 Tel: 1-631-559-9269 1-516-512-3133

 Email: info@creative-biomart.com  Fax: 1-631-938-8127

 45-1 Ramsey Road, Shirley, NY 11967, USA

Notes	Best use within three months from the date of receipt of this protein.
Storage	Store at -80 centigrade. Aliquot to avoid repeated freezing and thawing.
Storage Buffer	50 mM Tris-HCl, 10 mM reduced Glutathione, pH=8.0 in the elution buffer.

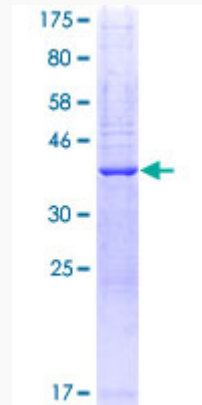
GENE INFORMATION

Gene Name	BMP5 bone morphogenetic protein 5 [Homo sapiens]
Official Symbol	BMP5
Synonyms	BMP5; bone morphogenetic protein 5; BMP-5; MGC34244;
Gene ID	653
mRNA Refseq	NM_021073
Protein Refseq	NP_066551
MIM	112265
UniProt ID	P22003

 Tel: 1-631-559-9269 1-516-512-3133

 Email: info@creative-biomart.com  Fax: 1-631-938-8127

 45-1 Ramsey Road, Shirley, NY 11967, USA



 Tel: 1-631-559-9269 1-516-512-3133

 Email: info@creative-biomart.com  Fax: 1-631-938-8127

 45-1 Ramsey Road, Shirley, NY 11967, USA