

Recombinant Active Human BMP6 Protein, His-tagged(C-ter)

Cat. No. BMP6-16H Lot. No. (See product label)

SPECIFICATION

Product Overview	Recombinant Active Human BMP6 Protein with His tag (C-ter) was expressed in E. coli.
Species	Human
Source	E.coli
Description	The bone morphogenetic proteins (BMPs) are a family of secreted signaling molecules that can induce ectopic bone growth. Many BMPs are part of the transforming growth factor-beta (TGFB) superfamily. BMPs were originally identified by an ability of demineralized bone extract to induce endochondral osteogenesis in vivo in an extraskelatal site. Based on its expression early in embryogenesis, the BMP encoded by this gene has a proposed role in early development. In addition, the fact that this BMP is closely related to BMP5 and BMP7 has lead to speculation of possible bone inductive activity. [provided by RefSeq, Jul 2008]
Form	Powder
Bio-activity	Determined by its ability to induce alkaline phosphatase production by ATDC5 cells. The ED50 for this effect is < 87 ng/mL.
AA Sequence	MVSSASDYNSSELKTACRKHELYVSFQDLGWQDWIIAPKGYAANYCDGECSFPLNA HMNATNHAIVQTLVHLMNPEYVVPKPCAPTCLNAISVLYFDDNSNVILKKYRNMVVR ACGCH

 Tel: 1-631-559-9269 1-516-512-3133

 Email: info@creative-biomart.com  Fax: 1-631-938-8127

 45-1 Ramsey Road, Shirley, NY 11967, USA

Endotoxin	Endotoxin level is less than 0.1 EU/μg of the protein, as determined by the LAL test.
Purity	> 98% (by SDS-PAGE)
Applications	SDS-PAGE
Notes	For laboratory research only, not for drug, diagnostic or other use.
Storage	Lyophilized protein should be stored at -20°C. After reconstitution, aliquot and store at -20°C or -80°C for up to one month. Storage in frost free freezers is not recommended. Avoid repeated freeze/thaw cycles. Suggest spin the vial prior to opening.
Storage Buffer	20 mM Sodium citrate (pH 3.5) and 0.2 M NaCl.
Reconstitution	It is recommended to reconstitute the lyophilized protein in sterile water to a concentration not less than 100 μg/mL and incubate the stock solution for at least 20 min at room temperature to make sure the protein is dissolved completely.

GENE INFORMATION

Gene Name	BMP6 bone morphogenetic protein 6 [Homo sapiens]
Official Symbol	BMP6
Synonyms	BMP6; bone morphogenetic protein 6; vegetal related growth factor (TGFB related) , VGR; VGR1; BMP-6; VGR-1; VG-1-R; VG-1-related protein; Vg1-related sequence; vegetal-related (TGFB related) cytokine; vegetal related growth factor (TGFB-related); VGR;
Gene ID	654

 Tel: 1-631-559-9269 1-516-512-3133

 Email: info@creative-biomart.com  Fax: 1-631-938-8127

 45-1 Ramsey Road, Shirley, NY 11967, USA

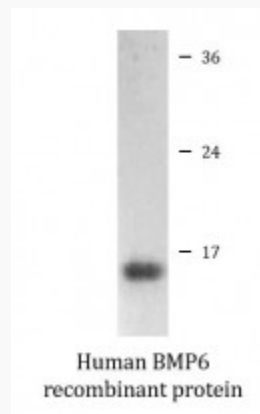
mRNA Refseq [NM_001718](#)

Protein Refseq [NP_001709](#)

MIM [112266](#)

UniProt ID [P22004](#)

SDS-PAGE



 Tel: 1-631-559-9269 1-516-512-3133

 Email: info@creative-biomart.com  Fax: 1-631-938-8127

 45-1 Ramsey Road, Shirley, NY 11967, USA