

## Recombinant Human Bone Morphogenetic Protein 6

Cat. No. BMP6-42H Lot. No. (See product label)

### SPECIFICATION

<b>Product Overview</b>	Recombinant Human BMP6 was expressed in E. coli.
<b>Species</b>	Human
<b>Source</b>	E.coli
<b>Description</b>	<p>The bone morphogenetic proteins (BMPs) are a family of secreted signaling molecules that can induce ectopic bone growth. Many BMPs are part of the transforming growth factor-beta (TGFB) superfamily. BMPs were originally identified by an ability of demineralized bone extract to induce endochondral osteogenesis in vivo in an extraskeletal site. Based on its expression early in embryogenesis, the BMP encoded by this gene has a proposed role in early development. In addition, the fact that this BMP is closely related to BMP5 and BMP7 has lead to speculation of possible bone inductive activity.</p>
<b>Molecular Mass</b>	monomer (15 kDa), dimer (30 kDa)
<b>Purity</b>	≥98% as determined by SDSPAGE and HPLC.
<b>Physical Form</b>	Sterile filtered and lyophilized with no additives
<b>Appearance</b>	Lyophilized protein
<b>Endotoxin Level</b>	<0.1 ng/μg

 Tel: 1-631-559-9269 1-516-512-3133

 Email: [info@creative-biomart.com](mailto:info@creative-biomart.com)  Fax: 1-631-938-8127

 45-1 Ramsey Road, Shirley, NY 11967, USA

<b>Biological Activity</b>	Recombinant human BMP-6 is biologically active. The ED50 as determined by dose-dependent induction of alkaline phosphatase activity with C2C12 cells is in the range of 2-12 g/ml.
<b>Reconstitution</b>	Reconstitute to a concentration of 0.1-1.0 mg/ml in sterile 20 mM acetic acid. This solution can then be diluted into other aqueous buffers and stored at 4°C for 1 week or -20°C for future use.
<b>Storage</b>	-20°C
<b>OfficialSymbol</b>	BMP6
<b>GENE INFORMATION</b>	
<b>Gene Name</b>	<a href="#">BMP6 bone morphogenetic protein 6 [ Homo sapiens ]</a>
<b>Synonyms</b>	BMP6; bone morphogenetic protein 6; VGR; VGR1; vegetal related growth factor (TGFB- related); Bone morphogenetic protein 6; VG-1-related protein; VG-1-R; VGR-1; BMP-6; Vg1-related sequence; vegetal-related (TGFB related) cytokine
<b>Gene ID</b>	<a href="#">654</a>
<b>mRNA Refseq</b>	<a href="#">NM_001718</a>
<b>Protein Refseq</b>	<a href="#">NP_001709</a>
<b>MIM</b>	<a href="#">112266</a>
<b>UniProt ID</b>	<a href="#">P22004</a>
<b>Chromosome</b>	6p24-p23

 Tel: 1-631-559-9269 1-516-512-3133

 Email: [info@creative-biomart.com](mailto:info@creative-biomart.com)  Fax: 1-631-938-8127

 45-1 Ramsey Road, Shirley, NY 11967, USA

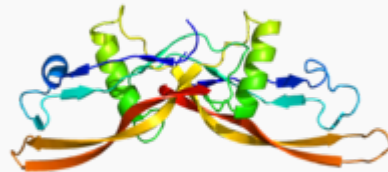
**Location****Pathway**

BMP receptor signaling; Endochondral Ossification; Id Signaling Pathway; TGF-beta signaling pathway

**Function**

cytokine activity; growth factor activity; BMP receptor binding; protein heterodimerization activity

Rendering based  
onPDB 2QCW.



 Tel: 1-631-559-9269 1-516-512-3133

 Email: [info@creative-biomart.com](mailto:info@creative-biomart.com)  Fax: 1-631-938-8127

 45-1 Ramsey Road, Shirley, NY 11967, USA