

Recombinant Human Bone Morphogenetic Protein 7, His-tagged

Cat. No. BMP7-10H **Lot. No.** (See product label)

SPECIFICATION

Product Overview	Recombinant human BMP-7 protein was expressed in E.coli and purified by using conventional chromatography techniques, after refolding of the isolated inclusion body in renaturation buffer, 16.8 kDa (148 aa).
Species	Human
Source	E.coli
Description	Bone morphogenic protein-7 (BMP-7/OP-1) is a member of the transforming growth factor-beta (TGF-beta) superfamily. Like other members of the BMPs family, it plays a role in calcium regulation and bone homeostasis. BMPs have been also shown to regulate the growth, differentiation, chemotaxis and apoptosis of various cell types, including mesenchymal cells, epithelial cells, hematopoietic cells and neuronal cells. BMP7 also has the potential for treatment of chronic kidney disease.
Sequences of amino acids	MSTGSKQRSQ NRSKTPKNQE ALRMANVAEN SSSDQRQACK KHELYVSFRD LGWQDWIAP EGYAAYYCEG ECAFPLNSYM NATNHAIVQT LVHFINPETV PKPCCAPTQL NAISVLYFDD SSNVILKKYR NMVVRACGCH LEHHHHHH
Formulation	Liquid. In 10mM Sodium Citrate buffer (pH 3.5) containing 10% glycerol
Purity	> 95% by SDS - PAGE
Concentration	0.5 mg/ml (determined by Bradford assay)

 Tel: 1-631-559-9269 1-516-512-3133

 Email: info@creative-biomart.com  Fax: 1-631-938-8127

 45-1 Ramsey Road, Shirley, NY 11967, USA

Storage Can be stored at +4°C short term (1-2 weeks). For long term storage, aliquot and store at -20°C or -70°C. Avoid repeated freezing and thawing cycles.

GENE INFORMATION

Gene Name BMP7 bone morphogenetic protein 7 [Homo sapiens]

Synonyms BMP-7; OP-1; OP1; OTTHUMP00000031357; Eptotermin alfa; Osteogenic protein 1; bone morphogenetic protein 7; BMP7

Gene ID 655

mRNA Refseq NM_001719

Protein Refseq NP_001710

MIM 112267

UniProt ID P18075

Chromosome Location 20q13

Pathway Cytokine-cytokine receptor interaction; Hedgehog signaling pathway; TGF-beta signaling pathway

Function cytokine activity; growth factor activity; heparin binding; protein binding

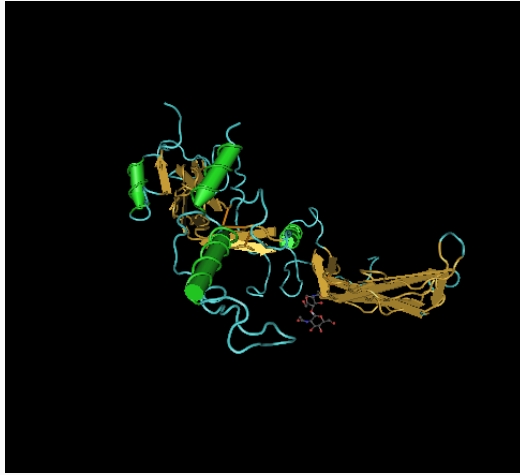
 Tel: 1-631-559-9269 1-516-512-3133

 Email: info@creative-biomart.com  Fax: 1-631-938-8127

 45-1 Ramsey Road, Shirley, NY 11967, USA



**bone morphogenetic
protein 7**



☎ Tel: 1-631-559-9269 1-516-512-3133

☎ Email: info@creative-biomart.com ☎ Fax: 1-631-938-8127

☎ 45-1 Ramsey Road, Shirley, NY 11967, USA