

## Active Recombinant Human BMP8A Protein (Ala264-His402), C-His tagged, Animal-free, Carrier-free

Cat. No. BMP8A-161H Lot. No. (See product label)

### SPECIFICATION

|                         |  |
|-------------------------|--|
| <b>Product Overview</b> | Recombinant Human BMP8A Protein (Ala264-His402) with C-His tag was expressed in E. coli and Animal-free as well as Carrier-free.   |
| <b>Species</b>          | Human  |
| <b>Source</b>           | E.coli   |
| <b>ProteinLength</b>    | Ala264-His402  |
| <b>Description</b>      | Bone Morphogenetic Protein-8 (BMP-8) is an extracellular multifunctional cytokine that is also a member of the TGF- $\beta$ family. BMP-8 can bind with TGF- $\beta$ receptor and is involved in SMAD protein signal transduction. In addition, BMP-8 participates in the downregulation of insulin secretion that lets the heat stabilize. Moreover, it participates in ossification and is essential to cartilage and hard bone development. |
| <b>Form</b>             | Lyophilized  |
| <b>Bio-activity</b>     | Measure by its ability to induce alkaline phosphatase production by ATDC5 cells. The ED50 for this effect is 10-19.4 ng/mL.  |
| <b>Molecular Mass</b>   | The protein has a calculated MW of 16.61 kDa.<br>The protein migrates as 17 kDa under reducing condition (SDS-PAGE analysis).  |
| <b>Endotoxin</b>        | < 0.1 EU/ $\mu$ g of the protein by the LAL method.  |

 Tel: 1-631-559-9269 1-516-512-3133

 Email: [info@creative-biomart.com](mailto:info@creative-biomart.com)  Fax: 1-631-938-8127

 45-1 Ramsey Road, Shirley, NY 11967, USA

|                       |   |
|-----------------------|---|
| <b>Purity</b>         | >98% as determined by SDS-PAGE analysis.  |
| <b>Storage</b>        | This product is stable after storage at:<br>-20 centigrade for 12 months in lyophilized state from date of receipt.<br>-20 or -80 centigrade for 1 month under sterile conditions after reconstitution.<br>Avoid repeated freeze/thaw cycles. |
| <b>Storage Buffer</b> | Lyophilized from a 0.2 µm filtered solution containing 20 mM sodium citrate and 0.2 M NaCl, pH 3.5.   |
| <b>Reconstitution</b> | It is recommended to reconstitute the lyophilized protein in 4 mM HCl to a concentration not less than 200 µg/mL and incubate the stock solution for at least 20 min to ensure sufficient re-dissolved.                                       |
| <b>Shipping</b>       | The product is shipped with polar packs. Upon receipt, store it immediately at -20 centigrade or lower for long term storage.   |

## GENE INFORMATION

|                        |  |
|------------------------|--|
| <b>Gene Name</b>       | <a href="#">BMP8A bone morphogenetic protein 8a [ Homo sapiens (human) ]</a>                     |
| <b>Official Symbol</b> | <a href="#">BMP8A</a>  |
| <b>Synonyms</b>        | BMP8A; bone morphogenetic protein 8a; bone morphogenetic protein 8A; BMP-8A; FLJ14351; FLJ45264; |
| <b>Gene ID</b>         | <a href="#">353500</a>   |
| <b>mRNA Refseq</b>     | <a href="#">NM_181809</a>  |
| <b>Protein Refseq</b>  | <a href="#">NP_861525</a>  |

 Tel: 1-631-559-9269 1-516-512-3133

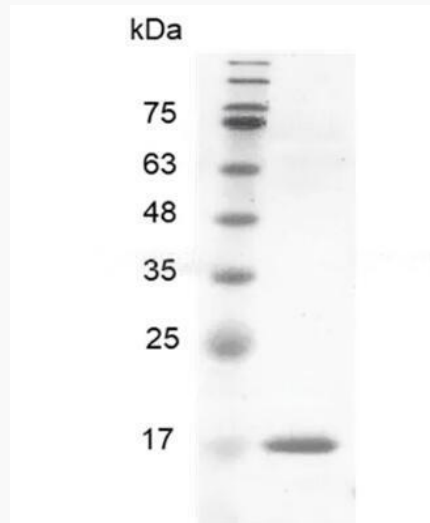
 Email: [info@creative-biomart.com](mailto:info@creative-biomart.com)  Fax: 1-631-938-8127

 45-1 Ramsey Road, Shirley, NY 11967, USA

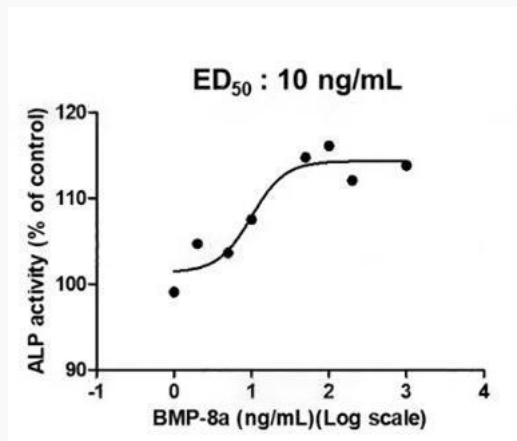
UniProt ID

Q7Z5Y6

SDS-PAGE analysis  
of recombinant  
human BMP-8a.



Activity



Human BMP-8a, His Tag, E. coli (LDG105PHE) induced alkaline phosphatase production by ATDC5 cells, with the ED<sub>50</sub> at 10 ng/mL.

 Tel: 1-631-559-9269 1-516-512-3133

 Email: [info@creative-biomart.com](mailto:info@creative-biomart.com)  Fax: 1-631-938-8127

 45-1 Ramsey Road, Shirley, NY 11967, USA