

# Recombinant Active Human BMP8A Protein, His-tagged(C-ter)

Cat. No. BMP8A-18H    Lot. No. (See product label)

## SPECIFICATION

<b>Product Overview</b>	Recombinant Active Human BMP8A Protein with His tag (C-ter) was expressed in E. coli.
<b>Species</b>	Human
<b>Source</b>	E.coli
<b>Description</b>	This gene encodes a secreted ligand of the TGF-beta (transforming growth factor-beta) superfamily of proteins. Ligands of this family bind various TGF-beta receptors leading to recruitment and activation of SMAD family transcription factors that regulate gene expression. The encoded preprotein is proteolytically processed to generate each subunit of the disulfide-linked homodimer. This protein may play a role in development of the reproductive system. This gene may have arose from a gene duplication event and its gene duplicate is also present on chromosome 1.
<b>Form</b>	Powder
<b>Bio-activity</b>	Determined by its ability to induce alkaline phosphatase production by ATDC5 cells. The ED50 for this effect is 10-19.4 ng/mL.
<b>AA Sequence</b>	MAVRPLRRRQPKKSNELPQANRLPGIFDDVHGSHGRQVCRRELYVVSFQDLGWLD WVIAPQGYSAYYCEGECFPLDSCMNATNHAILQSLVHLMKPNVAVPKACCAPTCLS ATSVLYYDSSNNVILRKHRNMVVKACGCH
<b>Endotoxin</b>	Endotoxin level is less than 0.1 EU/μg of the protein, as determined by the LAL test.

 Tel: 1-631-559-9269    1-516-512-3133

 Email: [info@creative-biomart.com](mailto:info@creative-biomart.com)     Fax: 1-631-938-8127

 45-1 Ramsey Road, Shirley, NY 11967, USA

<b>Purity</b>	> 98% (by SDS-PAGE)
<b>Applications</b>	SDS-PAGE
<b>Notes</b>	For laboratory research only, not for drug, diagnostic or other use.
<b>Storage</b>	Lyophilized protein should be stored at -20°C. After reconstitution, aliquot and store at -20°C or -80°C for up to one month. Storage in frost free freezers is not recommended. Avoid repeated freeze/thaw cycles. Suggest spin the vial prior to opening.
<b>Storage Buffer</b>	20 mM Sodium citrate (pH 3.5) and 0.2 M NaCl.
<b>Reconstitution</b>	It is recommended to reconstitute the lyophilized protein in sterile water to a concentration not less than 100 µg/mL and incubate the stock solution for at least 20 min at room temperature to make sure the protein is dissolved completely.

## GENE INFORMATION

<b>Gene Name</b>	<a href="#">BMP8A bone morphogenetic protein 8a [ Homo sapiens ]</a>
<b>Official Symbol</b>	<a href="#">BMP8A</a>
<b>Synonyms</b>	BMP8A; bone morphogenetic protein 8a; bone morphogenetic protein 8A; BMP-8A; FLJ14351; FLJ45264;
<b>Gene ID</b>	<a href="#">353500</a>
<b>mRNA Refseq</b>	<a href="#">NM_181809</a>
<b>Protein Refseq</b>	<a href="#">NP_861525</a>

 Tel: 1-631-559-9269 1-516-512-3133

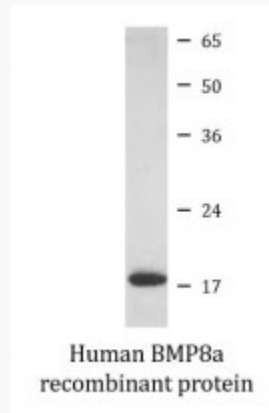
 Email: [info@creative-biomart.com](mailto:info@creative-biomart.com)  Fax: 1-631-938-8127

 45-1 Ramsey Road, Shirley, NY 11967, USA

UniProt ID

Q7Z5Y6

SDS-PAGE



 Tel: 1-631-559-9269 1-516-512-3133

 Email: [info@creative-biomart.com](mailto:info@creative-biomart.com)  Fax: 1-631-938-8127

 45-1 Ramsey Road, Shirley, NY 11967, USA