

## Recombinant Human BMP8A Protein, GST-tagged

Cat. No. BMP8A-276H Lot. No. (See product label)

### SPECIFICATION

<b>Product Overview</b>	Human BMP8A partial ORF ( NP_861525.1, 112 a.a. - 208 a.a.) recombinant protein with GST-tag at N-terminal.
<b>Species</b>	Human
<b>Source</b>	Wheat Germ
<b>Form</b>	50 mM Tris-HCl, 10 mM reduced Glutathione, pH=8.0 in the elution buffer.
<b>Molecular Mass</b>	36.41 kDa
<b>AA Sequence</b>	VERDRALGHQEPHWKEFRFDLTQIPAGEAVTAAEFRIYKVPSIHLLNRTLHVSMFQV VQEQSNRESDLFFLDLQTLRAGDEGWLVLVDVTAASDCWLL
<b>Notes</b>	Best use within three months from the date of receipt of this protein.
<b>Storage</b>	Store at -80 centigrade. Aliquot to avoid repeated freezing and thawing.
<b>Storage Buffer</b>	50 mM Tris-HCl, 10 mM reduced Glutathione, pH=8.0 in the elution buffer.

### GENE INFORMATION

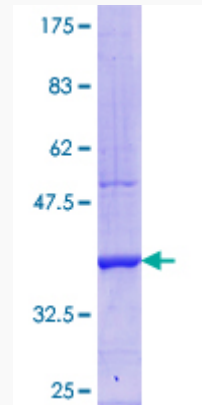
<b>Gene Name</b>	<a href="#">BMP8A bone morphogenetic protein 8a [ Homo sapiens ]</a>
<b>Official Symbol</b>	<a href="#">BMP8A</a>

 Tel: 1-631-559-9269 1-516-512-3133

 Email: [info@creative-biomart.com](mailto:info@creative-biomart.com)  Fax: 1-631-938-8127

 45-1 Ramsey Road, Shirley, NY 11967, USA

<b>Synonyms</b>	BMP8A; bone morphogenetic protein 8a; bone morphogenetic protein 8A; BMP-8A; FLJ14351; FLJ45264;
<b>Gene ID</b>	353500
<b>mRNA Refseq</b>	NM_181809
<b>Protein Refseq</b>	NP_861525
<b>UniProt ID</b>	Q7Z5Y6



Tel: 1-631-559-9269 1-516-512-3133

Email: [info@creative-biomart.com](mailto:info@creative-biomart.com) Fax: 1-631-938-8127

45-1 Ramsey Road, Shirley, NY 11967, USA