

## Active Recombinant Human BMPR2 protein, His&hFc-tagged

Cat. No. BMPR2-133H Lot. No. (See product label)

### SPECIFICATION

<b>Product Overview</b>	Active Recombinant Human BMPR2 protein(NP_001195.2)(Met 1-Ile 151) was expressed in HEK293, fused with the C-terminal polyhistidine-tagged Fc region of human IgG1 at the C-terminus.
<b>Species</b>	Human
<b>Source</b>	HEK293
<b>ProteinLength</b>	1-151 aa
<b>Form</b>	Lyophilized from sterile PBS, pH 7.4.
<b>Bio-activity</b>	Measured by its binding ability in a functional ELISA. Immobilized human BMPR-II-Fc at 10 µg/mL (100 µl/well) can bind biotinylated human BMP2-Fc, The EC50 of biotinylated human BMP2-Fc is 80-110 ng/mL.
<b>Molecular Mass</b>	The recombinant human BMPR-II/Fc is a disulfide-linked homodimer. The reduced monomer consists of 373 amino acids and has a predicted molecular mass of 42 kDa. As a result of glycosylation, the apparent molecular mass of rh BMPR-II/Fc monomer migrates with an apparent molecular mass of 60-65 kDa in SDS-PAGE under reducing conditions.
<b>Endotoxin</b>	< 1.0 EU per µg protein as determined by the LAL method.
<b>Purity</b>	> 90 % as determined by SDS-PAGE

 Tel: 1-631-559-9269 1-516-512-3133

 Email: [info@creative-biomart.com](mailto:info@creative-biomart.com)  Fax: 1-631-938-8127

 45-1 Ramsey Road, Shirley, NY 11967, USA

**Storage** Store it under sterile conditions at -20°C to -80°C upon receiving. Recommend to aliquot the protein into smaller quantities for optimal storage. Avoid repeated freeze-thaw cycles.

**Reconstitution** It is recommended that sterile water be added to the vial to prepare a stock solution of 0.2 ug/ul. Centrifuge the vial at 4°C before opening to recover the entire contents.

## GENE INFORMATION

**Gene Name** [BMPR2 bone morphogenetic protein receptor, type II \(serine/threonine kinase\) \[ Homo sapiens \]](#)

**Official Symbol** [BMPR2](#)

**Synonyms** [BMPR2](#); bone morphogenetic protein receptor, type II (serine/threonine kinase); PPH1, primary pulmonary hypertension 1; bone morphogenetic protein receptor type-2; [BMPR II](#); [BMPR3](#); [BRK 3](#); [T ALK](#); [BMPR-2](#); [BMP type-2 receptor](#); [BMP type II receptor](#); [type II activin receptor-like kinase](#); [bone morphogenetic protein receptor type II](#); [type II receptor for bone morphogenetic protein-4](#); [BMR2](#); [PPH1](#); [BRK-3](#); [T-ALK](#); [BMPR-II](#); [FLJ41585](#); [FLJ76945](#);

**Gene ID** [659](#)

**mRNA Refseq** [NM\\_001204](#)

**Protein Refseq** [NP\\_001195](#)

**MIM** [600799](#)

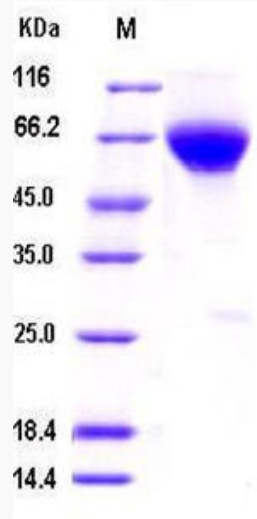
**UniProt ID** [Q13873](#)

 Tel: 1-631-559-9269 1-516-512-3133

 Email: [info@creative-biomart.com](mailto:info@creative-biomart.com)  Fax: 1-631-938-8127

 45-1 Ramsey Road, Shirley, NY 11967, USA

SDS-PAGE



 Tel: 1-631-559-9269 1-516-512-3133

 Email: [info@creative-biomart.com](mailto:info@creative-biomart.com)  Fax: 1-631-938-8127

 45-1 Ramsey Road, Shirley, NY 11967, USA