

## Recombinant Human BMPR2 Protein (Ser27-Ile151), C-His tagged

Cat. No. BMPR2-1375H    Lot. No. (See product label)

### SPECIFICATION

**Product Overview**      Recombinant human BMPR2 (Ser27-Ile151) fused with the C-terminal His tag was expressed in Mammalian cells.

**Species**                      Human

**Source**                        Mammalian Cells

**ProteinLength**              Ser27-Ile151

**Form**                          Lyophilized powder/frozen liquid

**Molecular Mass**            13.86 kDa

**Purity**                        >90% as determined by SDS-PAGE.

**Notes**                         For research use only.

**Storage**                      Use a manual defrost freezer and avoid repeated freeze thaw cycles.  
Store at 2 to 8 centigrade for one week.  
Store at -20 to -80 centigrade for twelve months from the date of receipt.

**Storage Buffer**              Supplied as solution form in PBS or lyophilized from PBS.

**Reconstitution**            Reconstitute in sterile water for a stock solution.

 Tel: 1-631-559-9269    1-516-512-3133

 Email: [info@creative-biomart.com](mailto:info@creative-biomart.com)     Fax: 1-631-938-8127

 45-1 Ramsey Road, Shirley, NY 11967, USA

**Shipping**

They are shipped out with dry ice/blue ice unless customers require otherwise.

**GENE INFORMATION**
**Gene Name**

BMPR2 bone morphogenetic protein receptor, type II (serine/threonine kinase) [ Homo sapiens (human) ]

**Official Symbol**

BMPR2

**Synonyms**

BMPR2; bone morphogenetic protein receptor, type II (serine/threonine kinase); PPH1, primary pulmonary hypertension 1; bone morphogenetic protein receptor type-2; BMPR II; BMPR3; BRK 3; T ALK; BMPR-2; BMP type-2 receptor; BMP type II receptor; type II activin receptor-like kinase; bone morphogenetic protein receptor type II; type II receptor for bone morphogenetic protein-4; BMR2; PPH1; BRK-3; T-ALK; BMPR-II; FLJ41585; FLJ76945;

**Gene ID**

659

**mRNA Refseq**

NM\_001204

**Protein Refseq**

NP\_001195

**MIM**

600799

**UniProt ID**

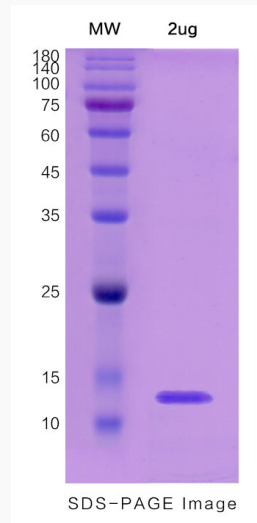
Q13873

 Tel: 1-631-559-9269 1-516-512-3133

 Email: [info@creative-biomart.com](mailto:info@creative-biomart.com)  Fax: 1-631-938-8127

 45-1 Ramsey Road, Shirley, NY 11967, USA

**SDS-PAGE**



 Tel: 1-631-559-9269 1-516-512-3133

 Email: [info@creative-biomart.com](mailto:info@creative-biomart.com)  Fax: 1-631-938-8127

 45-1 Ramsey Road, Shirley, NY 11967, USA