

Active Recombinant Full Length Human BMX Protein, C-Flag-tagged

Cat. No. BMX-462HFL **Lot. No.** (See product label)

SPECIFICATION

Product Overview	Recombinant Full Length Human BMX Protein, fused to Flag-tag at C-terminus, was expressed in Mammalian cells.
Species	Human
Source	Mammalian Cells
Description	This gene encodes a non-receptor tyrosine kinase belonging to the Tec kinase family. The protein contains a PH-like domain, which mediates membrane targeting by binding to phosphatidylinositol 3,4,5-triphosphate (PIP3), and a SH2 domain that binds to tyrosine-phosphorylated proteins and functions in signal transduction. The protein is implicated in several signal transduction pathways including the Stat pathway, and regulates differentiation and tumorigenicity of several types of cancer cells. Alternatively spliced transcript variants have been found for this gene.
Form	25 mM Tris HCl, pH 7.3, 100 mM glycine, 10% glycerol.
Bio-activity	BMX activity verified in a biochemical assay: BMX (BMX non-receptor tyrosine kinase) activity was measured in a homogeneous time-resolved fluorescent (HTRF®) assay. BMX is a non-receptor tyrosine kinase belonging to the Tec kinase family. BMX has been implicated in the Stat pathway and reportedly regulates differentiation and tumorigenicity of several types of cancer cells. Varying concentrations of BMX were added to a reaction mix containing ATP and a biotinylated kinase substrate and

 Tel: 1-631-559-9269 1-516-512-3133

 Email: info@creative-biomart.com  Fax: 1-631-938-8127

 45-1 Ramsey Road, Shirley, NY 11967, USA

the reaction mixture was incubated to allow the protein to phosphorylate the substrate. HTRF detection reagents were then added, and the time-resolved fluorescent signal was measured on a Flexstation 3 microplate reader. The time resolved fluorescent signal is expressed as “delta R” or “ΔR” and is a ratio calculated from the fluorescent emission intensities of the donor and acceptor fluorors.

Molecular Mass 77.8 kDa

AA Sequence

MDTKSILEELLKRSQQKKKMSPNNYKERLFVLTKTNLSYYEYDKMKRGSRKGSIEIK
 KIRCVEKVNLEE QTPVERQYPFQIVYKDGLLYVYASNEESRSQWLKALQKEIRGNP
 HLLVKYHSGFFVDGKFLCCQQSCKAA PGCTLWEAYANLHTAVNEEKHRVPTFPDR
 VLKIPRAVPVLKMDAPSSSTTLAQYDNESKKNYGSQPPSSS TSLAQYDSNSKKIYGS
 QPNFNMQYIPREDFPDWWQVRKLKSSSSSEDEVASSNQKERNVNHTTSKISWEFP E
 SSSSEEEENLDDYDWFAGNISRSQSEQLLRQKQKEGAFMVRNSSQVGMVTVSLFS
 KAVNDKKGTVKHYH VHTNAENKLYLAENYCFDSIPKLIHYHQHNSAGMITRLRHPVS
 TKANKVPDSVSLNGIWELKREEITLL KELGSGQFGVVQLGKWKGQYDVAVKMIKE
 GSMSEDEFFQEAQTMMKLSHPKLVKFGVCSKEYPIYIVTE YISNGCLLNLRSHGK
 GLEPSQLLEMCYDVCEGMAFLESHQFIHRDLAARNCLVDRDLCVKVSDFGMTRY V
 LDDQYVSSVGTKFPVKWSAPEVFHYFKYSSKSDVWAFGILMWEVFSLGKQPYDLY
 DNSQVVVKVSQGHR
 LYRPHLASDTIQIMYSCWHELPEKRPTFQQLLSSIEPLREKDKHTRTRPLEQKLISE
 EDLAANDILDYKDDDDKV

Purity > 80% as determined by SDS-PAGE and Coomassie blue staining.

Stability Stable for 12 months from the date of receipt of the product under proper storage and handling conditions. Avoid repeated freeze-thaw cycles.

Storage Store at -80 centigrade.

 Tel: 1-631-559-9269 1-516-512-3133

 Email: info@creative-biomart.com  Fax: 1-631-938-8127

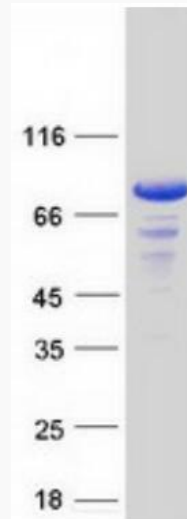
 45-1 Ramsey Road, Shirley, NY 11967, USA

Concentration	>50 ug/mL as determined by microplate BCA method.
Preparation	Recombinant protein was captured through anti-DDK affinity column followed by conventional chromatography steps.
Protein Families	Druggable Genome, Protein Kinase
Full Length	Full L.
GENE INFORMATION	
Gene Name	BMX BMX non-receptor tyrosine kinase [Homo sapiens (human)]
Official Symbol	BMX
Synonyms	ETK; PSCTK2; PSCTK3
Gene ID	660
mRNA Refseq	NM_001721.7
Protein Refseq	NP_001712.1
MIM	300101
UniProt ID	P51813

 Tel: 1-631-559-9269 1-516-512-3133

 Email: info@creative-biomart.com  Fax: 1-631-938-8127

 45-1 Ramsey Road, Shirley, NY 11967, USA



Coomassie blue staining of purified BMX protein.

 Tel: 1-631-559-9269 1-516-512-3133

 Email: info@creative-biomart.com  Fax: 1-631-938-8127

 45-1 Ramsey Road, Shirley, NY 11967, USA