

Recombinant Human BNIP3L protein, His-tagged

Cat. No. BNIP3L-7854H Lot. No. (See product label)

SPECIFICATION

Product Overview	Recombinant Human BNIP3L protein(77-146 aa), fused with N-terminal His tag, was expressed in E.coli.
Species	Human
Source	E.coli
ProteinLength	77-146 aa
Form	The purified protein was lyophilized from sterile phosphate-buffered saline (PBS: 58 mM Na ₂ HPO ₄ , 17 mM NaH ₂ PO ₄ , 68 mM NaCl, pH 7.4). Prior to lyophilization, 5% (w/v) trehalose and 5% (w/v) mannitol were incorporated as cryoprotective excipients.
AASequence	DAQHESGQSSSRGSSHCDSPSPQEDGQIMFDVEMHTSRDHSSQSEEEVVEGEKE VEALKKSADWVSDWSS
Purity	85%, by SDS-PAGE with Coomassie Brilliant Blue staining.
Storage	Store at 2-8°C for 1-2 weeks. Aliquot and store at -20°C to -80°C for up to 3 months, reconstitution with sterile water and addition of an equal volume of glycerol. Avoid repeat freeze-thaw cycles.
Reconstitution	Dissolve the product in 200 µl sterile water to achieve a working concentration of 0.25 g/

 Tel: 1-631-559-9269 1-516-512-3133

 Email: info@creative-biomart.com  Fax: 1-631-938-8127

 45-1 Ramsey Road, Shirley, NY 11967, USA

μl. If experimental compatibility allows, mix the aqueous solution with an equal volume of glycerol (1:1 ratio) after initial reconstitution.

GENE INFORMATION

Gene Name [BNIP3L BCL2/adenovirus E1B 19kDa interacting protein 3-like \[Homo sapiens \]](#)

Official Symbol [BNIP3L](#)

Synonyms [BNIP3L](#); [BCL2/adenovirus E1B 19kDa interacting protein 3-like](#); [BCL2/adenovirus E1B 19kD interacting protein 3 like](#); [BCL2/adenovirus E1B 19 kDa protein-interacting protein 3-like](#); [BNIP3a](#); [Nix](#); [NIP3L](#); [NIP3-like protein X](#); [adenovirus E1B19k-binding protein B5](#); [BCL2/adenovirus E1B 19-kd protein-interacting protein 3a](#); [BCL2/adenovirus E1B 19 kDa protein-interacting protein 3A](#); [NIX](#);

Gene ID [665](#)

mRNA Refseq [NM_004331](#)

Protein Refseq [NP_004322](#)

MIM [605368](#)

UniProt ID [O60238](#)

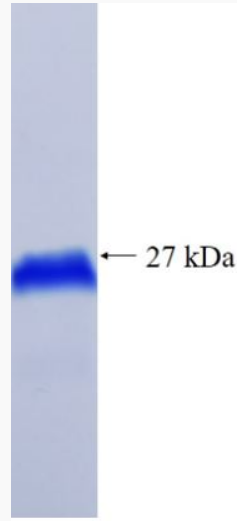
 Tel: 1-631-559-9269 1-516-512-3133

 Email: info@creative-biomart.com  Fax: 1-631-938-8127

 45-1 Ramsey Road, Shirley, NY 11967, USA



SDS-PAGE



Tel: 1-631-559-9269 1-516-512-3133

Email: info@creative-biomart.com Fax: 1-631-938-8127

45-1 Ramsey Road, Shirley, NY 11967, USA